

## LK81 SERIES

---

### 8 passages Pneumatic Rotary Union--Can combine electric wires

LK81 series is 8 passages Pneumatic Rotary Union(Can combine electric wires), with connection size G1/8", compact size, light weight, low torque, Also optional for transmitting power line, signal line, industrial bus, control line, Electromagnetic valve, induction line, etc.; Standard installation is flange mounting.

Media Types: compressed Air/Gas, vacuum, etc.

---

### Product images

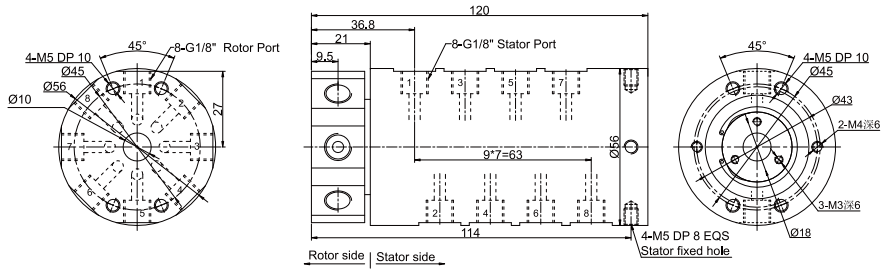


The pictures are for reference only

As the signal pathway increases or the combination of light and electricity results in changes in the appearance and size of the product, the actual product shall prevail.

---

## LK83 Series Dimensions

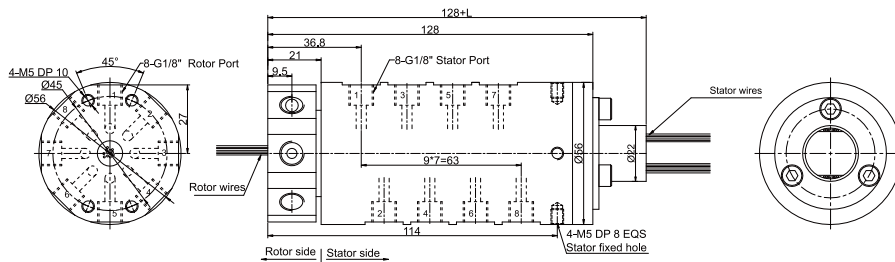


LK81 (rotary union only for pneumatic) drawing (8 in 8 out, connection size G1/8")

## Parts List

Model	Passages	Connection Size	Adaptive tube
Lk81	8	G1/8"	6~8mm

## LK81S Series Dimensions

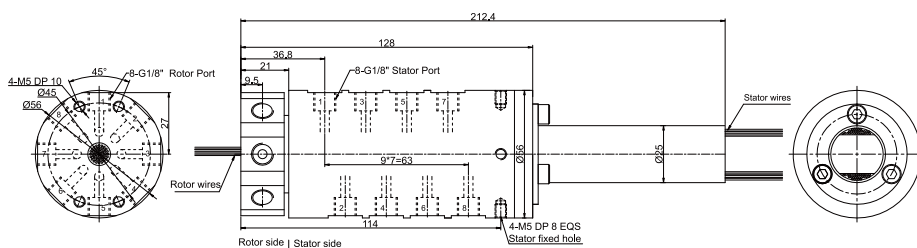


LK81S-S12(S18, S24, S36) drawing 8 in 8 out, connection size G1/8"+12~36 wires x signal(2A)

## Parts List

Model	Passages	Connection Size	Adaptive tube	Signal(2A)	L(mm)
LK81S-S12	8	G1/8"	6~8mm	12	22.5
LK81S-S18	8	G1/8"	6~8mm	18	29.5
LK81S-S24	8	G1/8"	6~8mm	24	40.1
LK81S-S38	8	G1/8"	6~8mm	36	53.8

## LK81S-S56 Series Dimensions

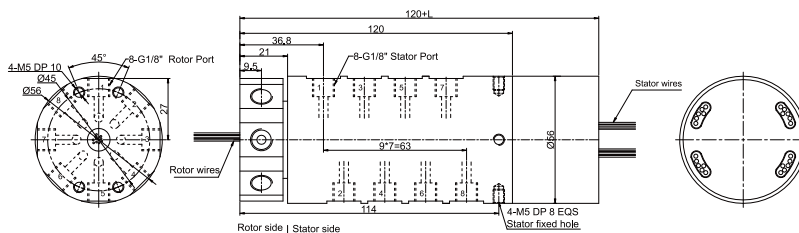


LK81S-S56 drawing 8 in 8 out, connection size G1/8"

## Parts List

Model	Passages	Connection Size	Adaptive tube	Signal(2A)
LK81S-S56	8	G1/8"	6~8mm	56

## LK81-PXX-SXX Series Dimensions



LK81-PXX-SXX drawing 8 in 8 out, connection size G1/8"+signal(5A)/10A

## Parts List

Model	Passages	Connection Size	Adaptive tube	10A	Signal(5A)	L(mm)
MK81-P0610	8	G1/8"	6~8mm	6	0	38
MK81-S06	8	G1/8"	6~8mm	0	6	38
MK81-P1210	8	G1/8"	6~8mm	12	0	54.8
MK81-P0610-S06	8	G1/8"	6~8mm	6	6	54.8
MK81-S12	8	G1/8"	6~8mm	0	12	54.8
MK81-P1810	8	G1/8"	6~8mm	18	0	71.5
MK81-P0610-S12	8	G1/8"	6~8mm	6	12	71.5
MK81-P1210-S06	8	G1/8"	6~8mm	12	6	71.5

Model	Passages	Connection Size	Adaptive tube	10A	Signal(5A)	L(mm)
MK81-S18	8	G1/8"	6~8mm	0	18	71.5
MK81-S24	8	G1/8"	6~8mm	0	24	88.4
MK81-P0610-S18	8	G1/8"	6~8mm	6	18	88.4
MK81-S30(2A)	8	G1/8"	6~8mm	0	30	105.2
MK81-S36(2A)	8	G1/8"	6~8mm	0	36	125

Note:10A and signal(5A) can be freely combined, please contact customer service for details.

## Rotary Union Specifications

Parameter	Value
Passage	8 in 8 out, G1/8"
Max Pressure	1MPa(high pressure can be customized), Vacuum 0.01torr
Torque	Related to the connection size, please see the product selection table

## Electrical Data

Parameter	Power	Signal
Rated Voltage	0~240VAC/VDC	0~240VAC/VDC
Insulation Resistance	≥500MΩ/500VDC	≥500MΩ/500VDC
Lead Wires	AWG17#Teflon/PVC	AWG22#Teflon/PVC
Lead Length	Standard 300mm(adjustable on request)	
Dielectric Strength	500VAC@50Hz, 60s	
Electrical Noise	<0.01Ω	

## Mechanical Data

Parameter	Value
Working life	Over 10 Million Revs
Rated Rotating Speed	300RPM
Working Temperature	-30°C~80°C
Operating Humidity	0~85% RH
Contact Material	Precious Metal
Housing Material	Aluminium Alloy
Protection Grade	IP51