

## BXME1221 SERIES 100M/1000M Ethernet Slip Rings

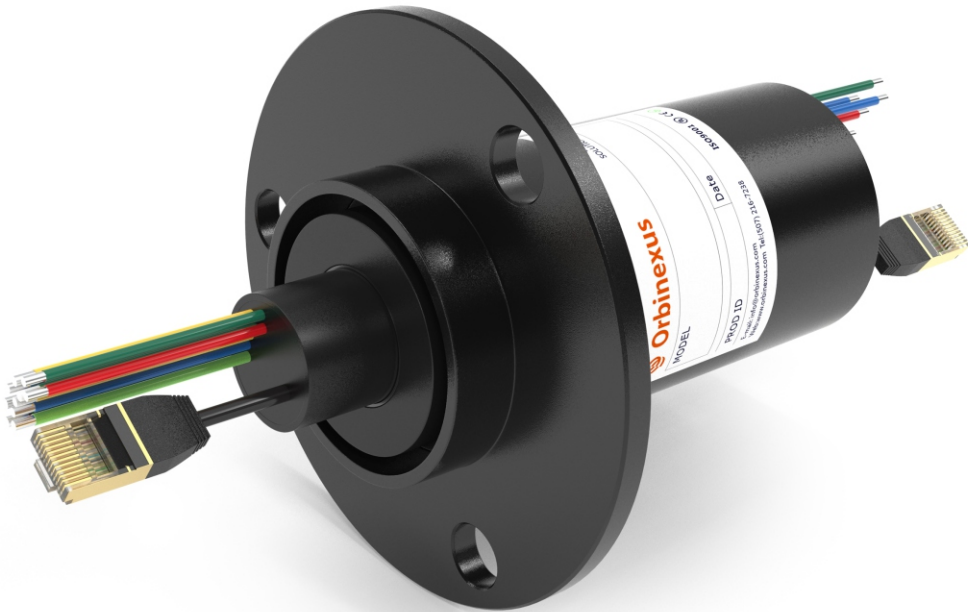
---

1 channel 1000M Ethernet+ 1~28 power and signal channel

BXME1221, support 1 channel 1000M ethernet slip rings, with compact OD 22mm, flange mounting, are standard, off-the-shelf, color-coded lead wires are used on both the stator and rotor for simplified electrical connections.

---

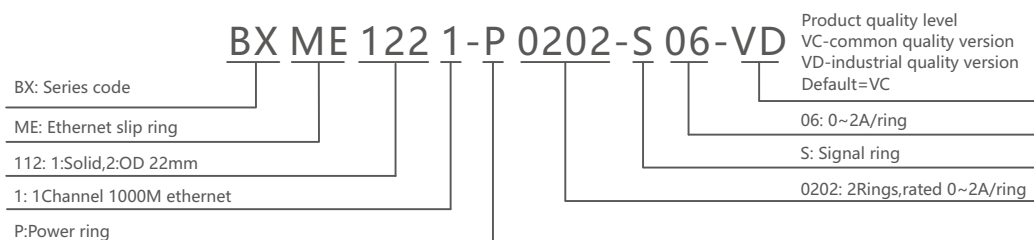
### Product images



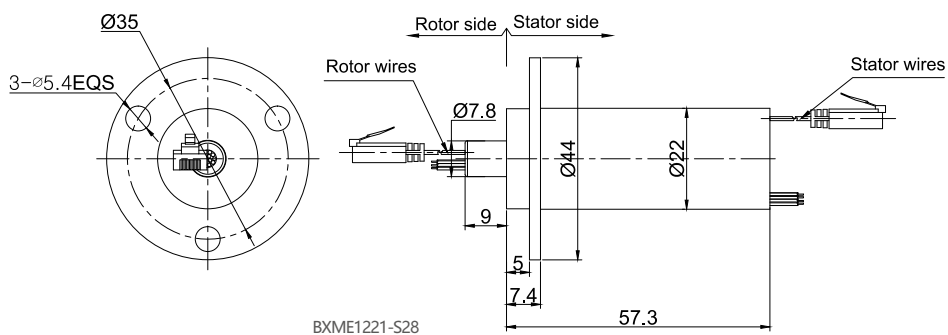
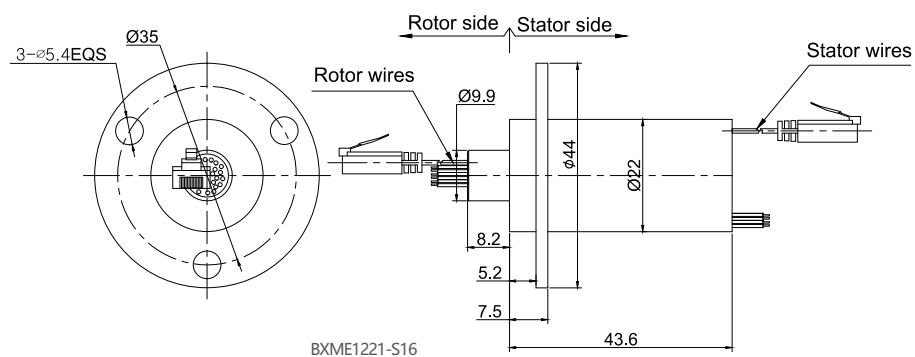
The pictures are for reference only

If there are changes in the appearance and size of the product, the actual product should prevail.

## Part# Explanation



## Dimensions



## BXME1221 Series Ethernet Slip Ring

Parts#	1000M Ethernet	4A	Signal or 2A	Length(mm)
BXME1221-S16	1	0	16	43.6
BXME1221-P0304-S10	1	3	10	43.6
BXME1221-P0604-S04	1	6	4	43.6
BXME1221-S28	1	0	28	57.3

Note: N channels 5A rings parallel can be used as 1 channel N\*5A current. For example: 2 rings 5A parallel could be used as 1 wires 10A

## Mechanical Data

Project	Numerical value
Working Life	See Product Quality Level Table
Rotating Speed	See Product Quality Level Table
Working temperature	-30°C~80°C
Operating Humidity	0~85% RH
Contact Material	See Product Quality Level Table
Housing Materia	Aluminium Alloy
Torque	0.1N.m, +0.03N.m/6 rings
Protection Grade	IP51

## Electrical Data

Project	Power	Signal
Rated Voltage	0~220VAC/VDC	0~120VAC/VDC
Insulation Resistance	≥100MΩ/220VDC	≥100MΩ/150VDC
Lead Wires	AWG28#Teflon	AAWG28# Teflon
Lead Length	Standard 300mm(adjustable)	
Insulating Strength	100VAC@50Hz,60s	
Electrical Noise	<0.01Ω	

## Ethernet Specification

Project	Value
1000M Ethernet	1 channel 1000M Ethernet
Connector	RJ45
Ber Error Rate	10E-11

## Product Quality Level Table

Products Level Code	Max Rotating Speed	Working Life	Contact Material
VC	150RPM	10 Million Revs	Precious Metal
VD	600RPM	20 Million Revs	Gold-plated

## Lead Wires Color Code

Ring	1	2	3	4	5	6	7	8
Color	BLK	RED	YLW	GRN	BLU	WHT	BLK	RED
Ring	9	10	11	12	13	14	15	16
Color	YLW	GRN	BLU	WHT	BLU,BLK	BLU,WHT	BLU,BLK	BLU,GRN
Ring	17	18	19	20	21	22	23	24
Color	BLU,YLW	BLU,RED	BLU,GRN	BRU,YLW	BRU,BLU	WHT,BLK	WHT,BLK	YLW,RED

(6 wires for 1 group color, from 7-12, repeat the same color as 1...6, indicated with number code pipe)