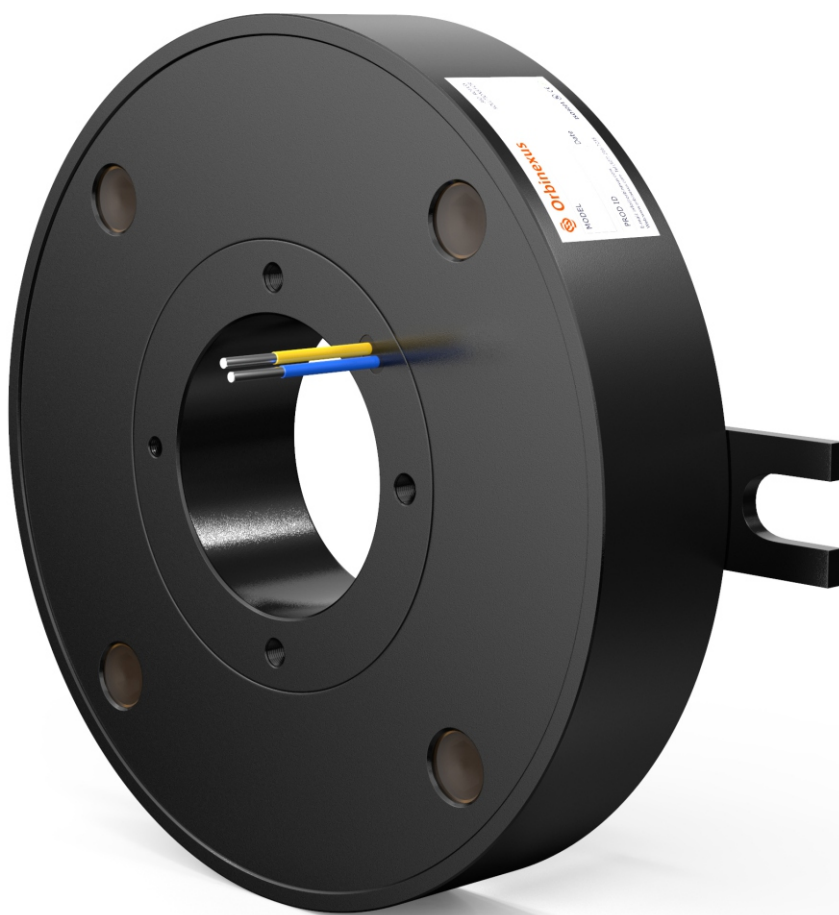


## BP310 SERIES PANCAKE SLIP RING

---

BP310 second pancake slip ring, through bore size is 12.7mm, all aluminum alloy structure, using precious metal contact material and gold-plated processing. It can transmit staBPe signal and power with small resistance fluctuations. It's mainly applied to those applications with transverse space limit but with no height space limit.

---



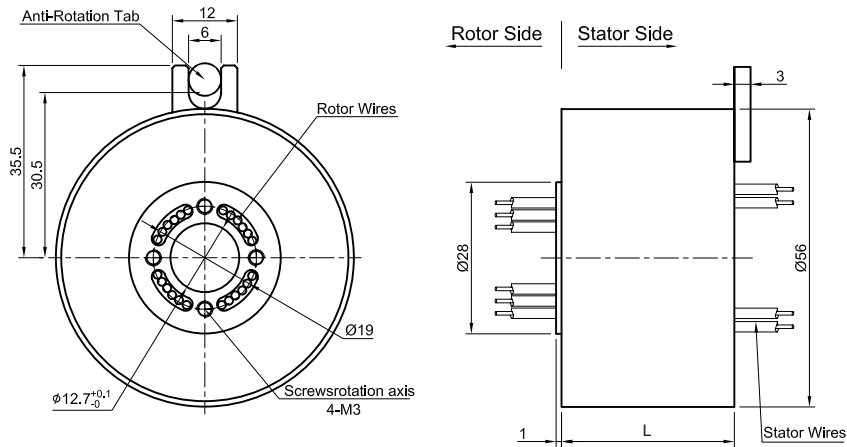
The pictures are for reference only

If there are changes in the appearance and size of the product, the actual product should prevail.

## Part# Explanation

<b>BP 310 - P 0610 - S 06 - VC</b>		Product quality level VC-common quality version VD-industrial quality version Default=VC version
BP:Code for pancake slip ring	310:Second pancake slip ring with bore size 12.7mm	
P:Power ring	0610: 6Rings, 0~10A eachring	06:6Signal rings(0~5A each ring)
		S: Signal ring

## Dimensions



## BP310 Series Pancake Slip Ring

Parts#	Signal(5A)	10A	20A	OD(mm)
BP310-S02	2	0	0	15.8
BP310-P0210	0	2	0	15.8
BP310-P0210-S02	2	2	0	21.4
BP310-P0410	0	4	0	21.4
BP310-S06	6	0	0	27
BP310-P0610	0	6	6	27
BP310-P0620	0	0	0	27
BP310-P0210-S04	4	2	0	27
BP310-S12	12	0	0	43.8
BP310-P1210	0	12	12	43.8
BP310-P1220	0	0	0	43.8
BP310-P0610-S06	6	6	6	43.8
BP310-P0620-S06	6	0	0	43.8
BP310-S18	18	0	0	60.6
BP310-P1810	0	18	0	60.6
BP310-P0610-S12	12	6	0	60.6
BP310-P1210-S06	6	12	0	60.6

Parts#	Signal(5A)	10A	20A	OD(mm)
BP310-P0810-S10	10	8	0	60.6
BP310-S24	24	0	0	77.4
BP310-P2410	0	24	0	77.4
BP310-P0610-S18	18	6	0	77.4
BP310-P1210-S12	12	12	0	77.4

Note:1) N channels 10A rings parallel can be used as 1 channel N\*10A current. For exaBPle: 2 rings 10A parallel could be used as 1 wires 20A  
2) Through bore size,total circuits and current can be customized,please contact sales for more details.

## Mechanical Data

Project	Numerical value
Working Life	See product quality level taBPe
Rotating Speed	See product quality level taBPe
Working TeBPerature	-30°C~80°C
Operating Humidity	0~85% RH
Contact Material	See product quality level taBPe
Housing Materia	aluminium alloy
Torque	0.05N.m; +0.03N.m/6rings
Protection Grade	IP51

## Electrical Data

Project	Power	Signal
Rated Voltage	0~440VAC/VDC	0~240VAC/VDC
Insulation Resistance	≥500MΩ/500VDC	≥500MΩ/500VDC
Lead Wire	AWG17#Teflon	AWG22#Teflon
Lead Length	Standard 300mm (adjustaBPe)	
Dielectric Strength	500VAC@50Hz, 60s	
Electrical Noise	<0.01Ω	

## Product Quality Level TaBPe

Products Level Code	Max Rotating Speed	Working Life	Contact Material
VC	60RPM	3 Million Revs	Precious Metal
VD	200RPM	10 Million Revs	Gold-plated

## Lead Wires Color Code

Ring	1	2	3	4	5	6	7	8	9	10	11	12
Color	BPK	RED	YEL	GRN	BPU	WHT	BPK	RED	YEL	GRN	BPU	WHT

Note: 6 wires for 1 group color, from 7-12, repeat the same color as 1...6, indicated with number code pipe.