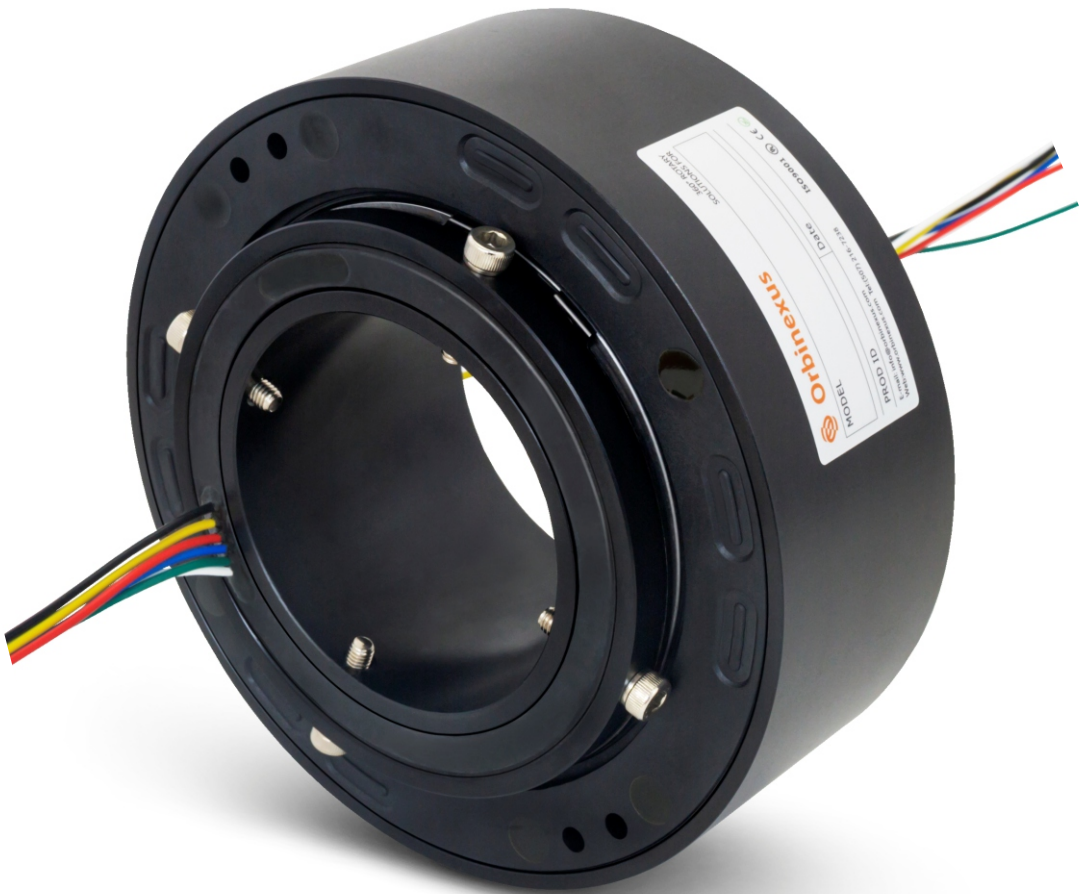


BH100185 SERIES

BH100185 series provides a 100mm through-bore for routing of hydraulic or pneumatic lines or hydraulic or pneumatic rotating shaft installation, and a compact 185mm outside diameter, features long life, fiber brush contact technology for ultimate performance in many challenging applications. BH100185 series are standard, off-the-shelf products, Color-coded lead wires are used on both the stator and rotor for simplified electrical connections. It can transmit signal (2A), 10A, multiple 10A current when 360° degree free rotating.

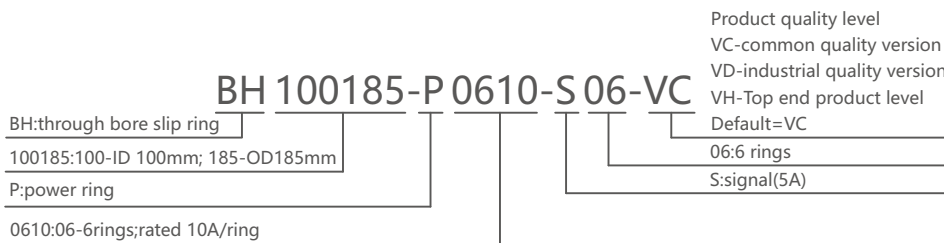
Product images



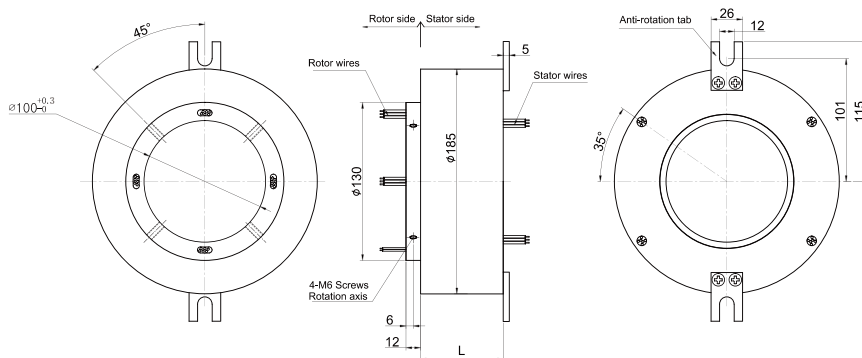
The pictures are for reference only

As the signal pathway increases or the combination of light and electricity results in changes in the appearance and size of the product, the actual product shall prevail.

Part# Explanation



Dimensions



BH100185 Series Parts# List

Part#	10A	Signal or 5A	Length-L (mm)
BH100185-S02	0	2	50
BH100185-P0210	2	0	50
BH100185-S03	0	3	54
BH100185-P0310	3	0	54
BH100185-S06	0	6	66
BH100185-P0210-S04	2	4	66
BH100185-P0410-S02	4	2	66
BH100185-P0610	6	0	66
BH100185-S12	0	12	90
BH100185-P0210-S10	2	10	90
BH100185-P0310-S09	3	9	90
BH100185-P0610-S06	6	6	90
BH100185-P0810-S04	8	4	90
BH100185-P1010-S02	10	2	90
BH100185-P1210	12	0	90
BH100185-S18	0	18	114
BH100185-P0210-S16	2	16	114
BH100185-P0410-S14	4	14	114
BH100185-P0610-S12	6	12	114
BH100185-P0810-S10	8	10	114
BH100185-P1010-S08	10	8	114
BH100185-P1210-S06	12	6	114
BH100185-P1410-S04	14	4	114
BH100185-P1610-S02	16	2	114

BH100185 Series Parts# List

Part#	10A	Signal or 5A	Length-L (mm)
BH100185-S24	0	24	138
BH100185-P0410-S20	4	20	138
BH100185-P0610-S18	6	18	138
BH100185-P1210-S12	12	12	138
BH100185-P1810-S06	18	6	138
BH100185-P2410	24	0	138
BH100185-S30	0	30	162
BH100185-P0610-S24	6	24	162
BH100185-P1210-S18	12	18	162
MT100185-P1810-S12	18	12	162
MT100185-P2410-S06	24	6	162
MT100185-P3010	30	0	162
BH100185-S36	0	36	190
BH100185-P0610-S30	6	30	190
BH100185-P1210-S24	12	24	190
BH100185-P3610	36	0	190
BH100185-S42	0	42	226
BH100185-P0610-S36	6	36	226
BH100185-P1210-S30	12	30	226
BH100185-S48	0	48	250
BH100185-P0610-S42	6	42	250
BH100185-P0910-S39	9	39	250
BH100185-P1210-S36	12	36	250
BH100185-P1810-S30	18	30	250
BH100185-P2410-S24	24	24	250
BH100185-S60	0	60	298
BH100185-P0610-S54	6	54	298
BH100185-P0910-S51	9	51	298
BH100185-P1210-S48	12	48	298
BH100185-S72	0	72	350
BH100185-P0610-S66	6	66	350
BH100185-P1210-S60	12	60	350
BH100185-P2410-S48	24	48	350
BH100185-P3610-S36	36	36	350
BH100185-S84	0	84	398
BH100185-P1210-S72	12	72	398
BH100185-P2410-S60	24	60	398
BH100185-P3610-S48	36	48	398
BH100185-S96	0	96	450
BH100185-P1210-S84	12	84	450
BH100185-P2410-S72	24	72	450
BH100185-P3610-S60	36	60	450
BH100185-P4210-S54	42	54	450
BH100185-S108	0	108	498
BH100185-P1210-S96	12	96	498
MT100185-P2410-S84	24	84	498
MT100185-P3610-S72	36	72	498
MT100185-P4810-S60	48	60	498

Note: N channels 10A rings parallel can be used as 1 channel N*10A current. For example: 2 rings 10A parallel could be used as 1 wires 20A. 10A,5A (signal) can combine freely in any way.It can be customized based on standard slip ring,please contact customer service for more detmails.

Electrical parameters

Project	Power	Siana
Rated Voltage	0~690VAC/VDC	0~440VAC/VDC
Insulation Resistance	≥1000MΩ/1000VDC	≥1000MΩ/500VDC
Lead Wires	AWG16#Teflon	AWG22#Teflon
Lead Length	Standard 300mm(adjustable)	
Insulation Strength	1000VAC@50Hz, 60s	
Electrical Noise	<0.01Ω	

Mechanical Data

Project	Value
Working Life	See Product Quality Level Table
Rotating Speed	See Product Quality Level Table
Working Temperature	-30°C~80°C
Operating Humidity	0~85% RH
Contact Material	See Product Quality Level Table
Housing Material	Aluminium Alloy / Engineering plastic
Torque	0.1N.m, +0.03N.m/6rings
Protection Grade	IP51

Product Quality Level Table

Products Level Code	Max Rotating Speed	Working Life	Contact Material
VC	150RPM	10 Million Revs	Precious Metal
VD	400RPM	30 Million Revs	Gold-plated
VH	800RPM	80 Million Revs	Gold-Gold

Lead Wires Color Code

Ring	1	2	3	4	5	6	7	8	9	10	11	12
Color	BLK	RED	YEL	GRN	BLU	WHT	BLK	RED	YEL	GRN	BLU	WHT

(6 wires for 1 group color, from 7-12, repeat the same color as 1...6, indicated with number code pipe)

Options For Custom Slip Ring

Note: Below special demands can be customized. According, the delivery date will be extended 3 to 15 days; also the cost will be increased 30% to 50%. Most of our basic parts are standard and modular, which can save the cost and lead time.

1. Cable exit way and cable length can be customized for both rotor and stator.
 2. Because of the structure limitation, length/height/OD can be customized on your request.
 3. Support current or signal up to 200 rings.
 4. Aviation plug, terminal and heat-shrink tube are optional.
 5. Hybrid slip ring for Yaskawa/Panasonic/Siemens servo control signal, power line and encoder line.
 6. Support mixed high speed data transmission (including Ethernet, USB, RS232, RS485, Profibus, CanBUS, CANOPEN, DeviceNET, CC-LINK, ProfiNET, EtherCAT, etc.)
 7. Can combine temperature control signal with thermocouple signal.
 8. Special environment can be customized, such as quakeproof, high temperature, etc.
 9. Hybrid Pneumatic/hydraulic and electric slip ring can be mixed.
 10. High temperature can up to 500 degrees.
 11. High pressure can up to 110KV
 12. Rotating speed can up to 10000RPM
 13. Maximum current can up to 5000 amperes.1Military grade
 14. Optional for underwater IP65, Ip68.
 15. Optional for stainless steel housing
- Technical support: Info@orbinexus.com