

# LK SERIES

## Rotary Unions (can combine with electric wires)

### Features

- Light weight, compact size, and low torque. Transmitting gas, vacuum on 360° rotating, can
- combine with electrical power, signal and/or data transfer.
- Support 1/2/3/4/5/6/8/10/12/16/24 Pneumatic passages.
- Support 1~128 wires electrical power/signal.
- Standard connection size G1/8", G3/8" and so on.
- Different pipe size for gas can be customized.
- Can transmit compressed air, vacuum, steam and other media.
- High speed and high voltage can be customized.



## LK Series Parts# List

Part#	Passages	Connection Size	Pressure
LK11A	1 in 1 out	G1/8"	80KPa, Vacuum
LK12A	1 in 1 out	G1/4"	80KPa, Vacuum
LK13A	1 in 1 out	G3/8"	80KPa, Vacuum
LK14A	1 in 1 out	G1/2"	80KPa, Vacuum

## LK series - G1/8" connection size parts list

Model	Passages	Connection Size	Adaptive tube	Number(power/signal(2A)
LK21	2 passages	G1/8"	6~8mm	Note:Pure pneumatic rotary union
LK21-XXX	2 passages	G1/8"	6~8mm	2~128 circuits electric
LK41	4 passages	G1/8"	6~8mm	Note:Pure pneumatic rotary union
LK41-XXX	4 passages	G1/8"	6~8mm	2~128 circuits electric
LK61	6 passages	G1/8"	6~8mm	Note:Pure pneumatic rotary union
LK81	8 passages	G1/8"	6~8mm	Note:Pure pneumatic rotary union
LK81-XXX	8 passages	G1/8"	6~8mm	2~128 circuits electric
LK121	12 passages	G1/8"	6~8mm	Note:Pure pneumatic rotary union
LK121-XXX	12 passages	G1/8"	6~8mm	2~128 circuits electric
LK241	24 passages	G1/8"	6~8mm	Note:Pure pneumatic rotary union
LK241-XXX	24 passages	G1/8"	6~8mm	2~128 circuits electric

## LK series - G3/8" connection size parts list

Model	Passages	Connection Size	Adaptive tube	Number(power/signal(2A)
LK23	2 passages	G3/8"	10~12mm	Note:Pure pneumatic rotary union
LK23-XXX	2 passages	G3/8"	10~12mm	2~128 circuits electric
LK43	4 passages	G3/8"	10~12mm	Note:Pure pneumatic rotary union
LK43+XXX	4 passages	G3/8"	10~12mm	2~128 circuits electric
LK83	8 passages	G3/8"	10~12mm	Note:Pure pneumatic rotary union
LK83+XXX	8 passages	G3/8"	10~12mm	2~128 circuits electric
LK123	12 passages	G3/8"	10~12mm	Note:Pure pneumatic rotary union
LK123+XXX	12 passages	G3/8"	10~12mm	2~128 circuits electric

## LK Series Parts# List

Part#	Passages	Connection Size	Pressure
LK11A	1 in 1 out	G1/8"	80KPa, Vacuum
LK12A	1 in 1 out	G1/4"	80KPa, Vacuum
LK13A	1 in 1 out	G3/8"	80KPa, Vacuum
LK14A	1 in 1 out	G1/2"	80KPa, Vacuum

# LK11A SERIES

## 1 passages Pneumatic Rotary Union

LK11a series single channel rotary joint, interface size G1 / 8 ", compact structure, light weight, corrosion resistance, stainless steel shaft and aluminum shell All LK series models are equipped with male thread shaft and female thread shell as standard for easy installation.

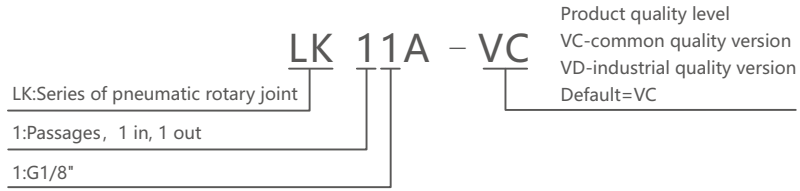
### Product images



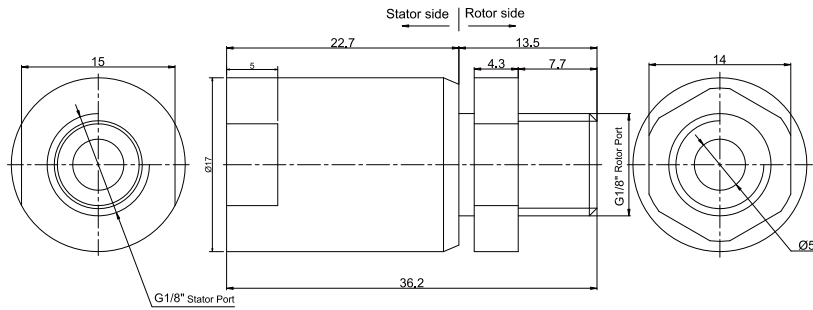
The pictures are for reference only

As the signal pathway increases or the combination of light and electricity results in changes in the appearance and size of the product, the actual product shall prevail.

## Part# Explanation



## Dimensions



## LK 11A Series Parts# List

Part#	Port Size	Port Size	Pressure
LK11A	1 in 1 out	G1/8"	80KPa, Vacuum

## Mechanical Data

Parameter	Value
Working life	Please see the product quality level table
Rated Rotating Speed	Please see the product quality level table
Working Temperature	-30°C~80°C
Operating Humidity	0~85% RH
Sealing Element	Please see the product quality level table
Housing Material	Aluminum alloy / steel
Protection Grade	IP51

## Rotary Joint Data

Parameter	Value
Passage	1 Passage
Max Pressure	Vacuum-80KPa
Dielectric medium	Air, Vacuum
Torque	Related to the connection size, please see the product selection table

## Product Quality Level Table

Products Level Code	Max Rotating Speed	Working Life	Sealing Element
VC	100RPM	6 Million Revs	Seals of domestic famous brand
VD	300RPM	20 Million Revs	Imported Sealing elemen

## Options for custom slip ring

Note: Below special demands can be customized. According, the delivery date will be extended 3 to 15 days; also the cost will be increased 30% to 50%. Most of our basic parts are standard and modular, which can save the cost and lead time.

# LK12A SERIES

## 1 passages Pneumatic Rotary Union

LK12a series single channel rotary joint, interface size G1 / 4 ", compact structure, light weight, corrosion resistance, stainless steel shaft and aluminum shell All LK series models are equipped with male thread shaft and female thread shell as standard for easy installation.

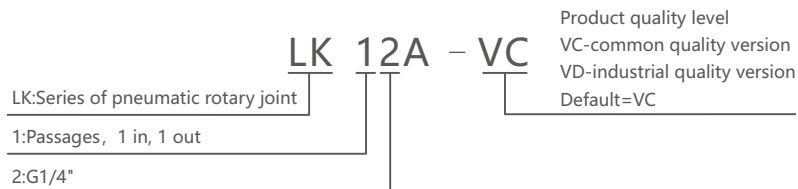
### Product images



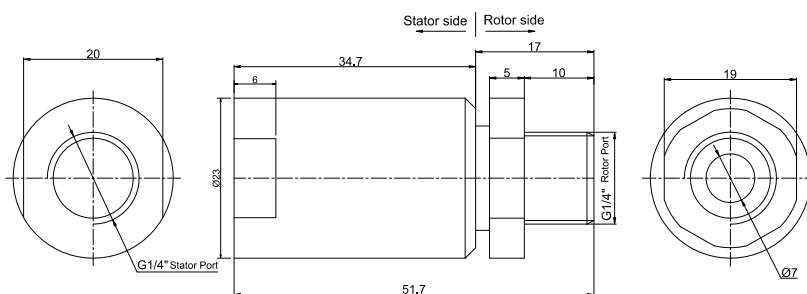
The pictures are for reference only

As the signal pathway increases or the combination of light and electricity results in changes in the appearance and size of the product, the actual product shall prevail.

## Part# Explanation



## Dimensions



## LK 12A Series Parts# List

Part#	Port Size	Port Size	Pressure
LK12A	1 in 1 out	G1/4"	80KPa, Vacuum

## Mechanical Data

Parameter	Value
Working life	Please see the product quality level table
Rated Rotating Speed	Please see the product quality level table
Working Temperature	-30°C~80°C
Operating Humidity	0~85% RH
Sealing Element	Please see the product quality level table
Housing Material	Aluminum alloy / steel
Protection Grade	IP51

## Rotary Joint Data

Parameter	Value
Passage	1 Passage
Max Pressure	Vacuum-80KPa
Dielectric medium	Air, Vacuum
Torque	Related to the connection size, please see the product selection table



## Product Quality Level Table

Products Level Code	Max Rotating Speed	Working Life	Sealing Element
VC	100RPM	6 Million Revs	Seals of domestic famous brand
VD	300RPM	20 Million Revs	Imported Sealing elemen

## Options for custom slip ring

Note: Below special demands can be customized. According, the delivery date will be extended 3 to 15 days; also the cost will be increased 30% to 50%. Most of our basic parts are standard and modular, which can save the cost and lead time.

# LK13A SERIES

---

## 1 passages Pneumatic Rotary Union

Mk13a series single channel rotary joint, interface size G3 / 8 ", compact structure, light weight, corrosion resistance, stainless steel shaft and aluminum shell All MK series models are equipped with male thread shaft and female thread shell as standard for easy installation.

---

### Product images

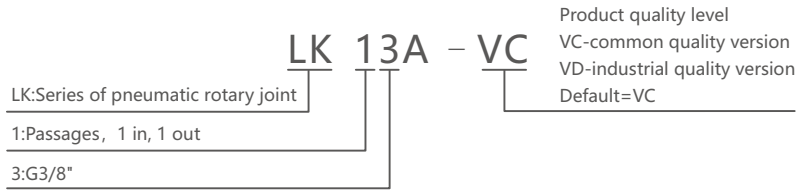


The pictures are for reference only

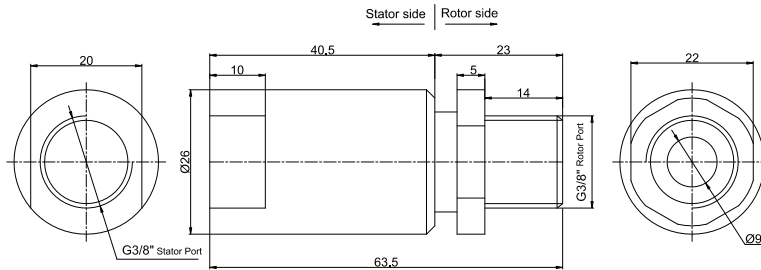
As the signal pathway increases or the combination of light and electricity results in changes in the appearance and size of the product, the actual product shall prevail.

---

## Part# Explanation



## Dimensions



## LK 13A Series Parts# List

Part#	Port Size	Port Size	Pressure
LK13A	1 in 1 out	G3/8"	80KPa, Vacuum

## Mechanical Data

Parameter	Value
Working life	Please see the product quality level table
Rated Rotating Speed	Please see the product quality level table
Working Temperature	-30°C~80°C
Operating Humidity	0~85% RH
Sealing Element	Please see the product quality level table
Housing Material	Aluminum alloy / steel
Protection Grade	IP51

## Rotary Joint Data

Parameter	Value
Passage	1 Passage
Max Pressure	Vacuum-80KPa
Dielectric medium	Air, Vacuum
Torque	Related to the connection size, please see the product selection table

## Product Quality Level Table

Products Level Code	Max Rotating Speed	Working Life	Sealing Element
VC	100RPM	6 Million Revs	Seals of domestic famous brand
VD	300RPM	20 Million Revs	Imported Sealing elemen

## Options for custom slip ring

Note: Below special demands can be customized. According, the delivery date will be extended 3 to 15 days; also the cost will be increased 30% to 50%. Most of our basic parts are standard and modular, which can save the cost and lead time.

# LK14A SERIES

## 1 passages Pneumatic Rotary Union

Mk14a series single channel rotary joint, interface size G1 / 2 ", compact structure, light weight, corrosion resistance, stainless steel shaft and aluminum shell All MK series models are equipped with male thread shaft and female thread shell as standard for easy installation.

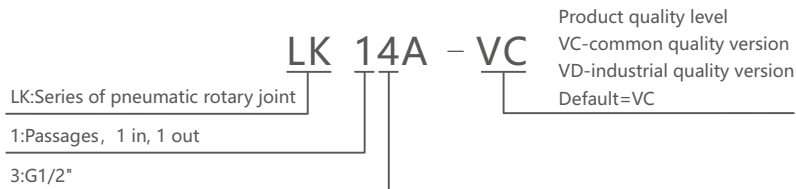
### Product images



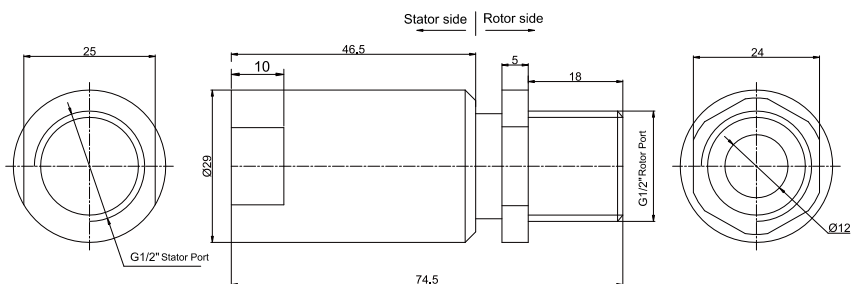
The pictures are for reference only

As the signal pathway increases or the combination of light and electricity results in changes in the appearance and size of the product, the actual product shall prevail.

## Part# Explanation



## Dimensions



## LK 14A Series Parts# List

Part#	Port Size	Port Size	Pressure
LK14A	1 in 1 out	G1/2"	80KPa, Vacuum

## Mechanical Data

Parameter	Value
Working life	Please see the product quality level table
Rated Rotating Speed	Please see the product quality level table
Working Temperature	-30°C~80°C
Operating Humidity	0~85% RH
Sealing Element	Please see the product quality level table
Housing Material	Aluminum alloy / steel
Protection Grade	IP51

## Rotary Joint Data

Parameter	Value
Passage	1 Passage
Max Pressure	Vacuum-80KPa
Dielectric medium	Air, Vacuum
Torque	Related to the connection size, please see the product selection table

## Product Quality Level Table

Products Level Code	Max Rotating Speed	Working Life	Sealing Element
VC	100RPM	6 Million Revs	Seals of domestic famous brand
VD	300RPM	20 Million Revs	Imported Sealing elemen

## Options for custom slip ring

Note: Below special demands can be customized. According, the delivery date will be extended 3 to 15 days; also the cost will be increased 30% to 50%. Most of our basic parts are standard and modular, which can save the cost and lead time.

## LK21A SERIES

---

### 2 passages Pneumatic Rotary Union--Can combine electric wires

LK21 series is 2 passages Pneumatic Rotary Union(Can combine electric wires), with connection size G1/8", compact size, light weight, low torque, Also optional for transmitting power line, signal line, industrial bus, control line, Electromagnetic valve, induction line, etc.; Standard installation is flange mounting. Media Types: compressed Air/Gas, vacuum, etc.

---

### Product images

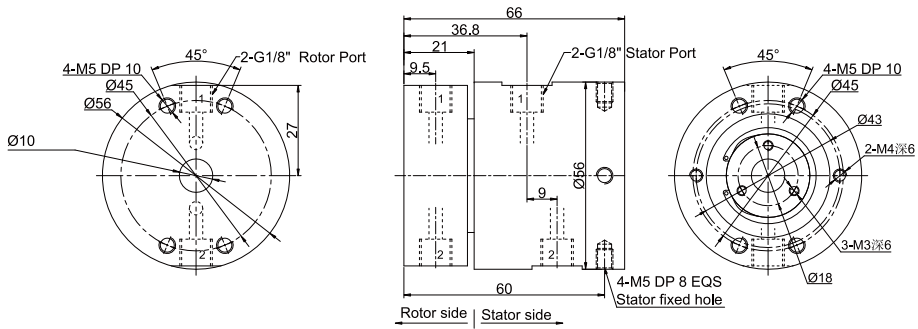


The pictures are for reference only

As the signal pathway increases or the combination of light and electricity results in changes in the appearance and size of the product, the actual product shall prevail.



## LK21 Series Dimensions

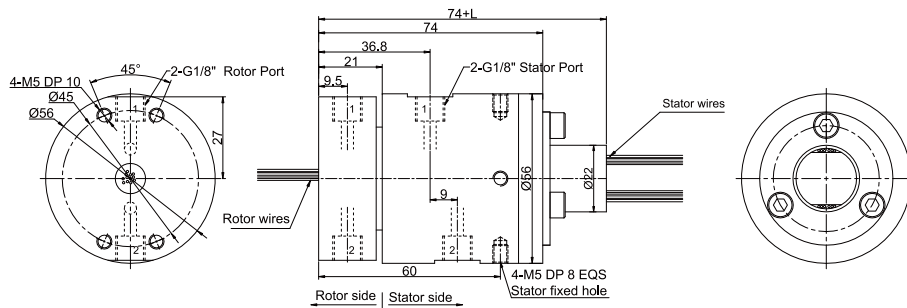


LK21 rotary union only for pneumatic (2 in 2 out, connection size G1/8")

## Parts List

Model	Passages	Connection Size	Adaptive tube
Lk21	2	G1/8"	6~8mm

## LK21S Series Dimensions

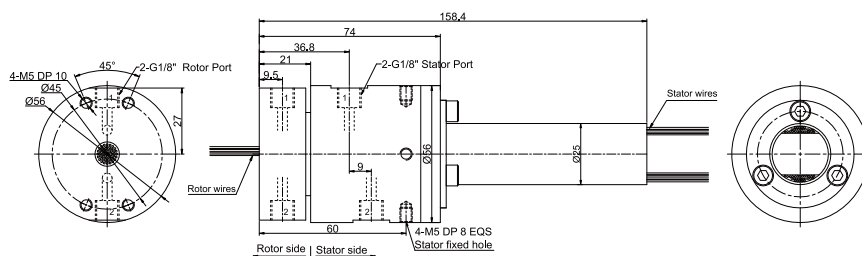


LK21S-S12(S18, S24, S36) 2 in 2 out, connection size G1/8"+12~36 wires x signal(2A)

## Parts List

Model	Passages	Connection Size	Adaptive tube	L(mm)
LK21S-S12	2	G1/8"	6~8mm	22.5
LK21S-S18	2	G1/8"	6~8mm	29.5
LK21S-S24	2	G1/8"	6~8mm	40.1
LK21S-S36	2	G1/8"	6~8mm	53.8

## LK21S-S56 Series Dimensions

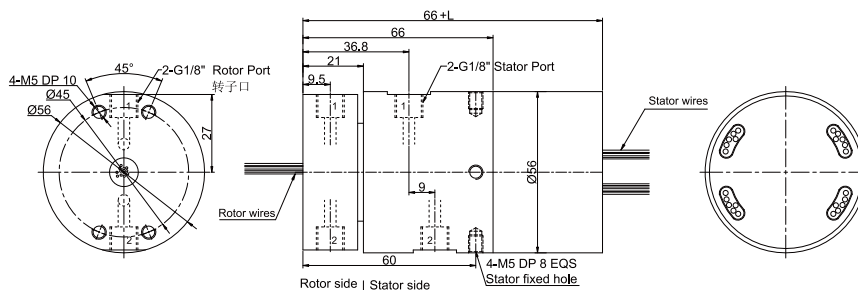


2 in 2 out, connection size G1/8"

## Parts List

Model	Passages	Connection Size	Adaptive tube	Signal(2A)
LK21S-S56	2	G1/8"	6~8mm	56

## LK21-PXX-SXX Series Dimensions



2 in 2 out, connection size G1/8" + signal(5A)/10A

## Parts List

Model	Passages	Connection Size	Adaptive tube	10A	Signal(5A)	L(mm)
LK21-P0610	2	G1/8"	6~8mm	6	0	38
LK21-S06	2	G1/8"	6~8mm	0	6	38
LK21-P1210	2	G1/8"	6~8mm	12	0	54.8
LK21-P0610-S06	2	G1/8"	6~8mm	6	6	54.8
LK21-S12	2	G1/8"	6~8mm	0	12	54.8
LK21-P1810	2	G1/8"	6~8mm	18	0	71.5
LK21-P0610-S12	2	G1/8"	6~8mm	6	12	71.5
LK21-P1210-S06	2	G1/8"	6~8mm	12	6	71.5

Model	Passages	Connection Size	Adaptive tube	10A	Signal(5A)	L(mm)
MK21-S18	2	G1/8"	6~8mm	0	18	71.5
MK21-S24	2	G1/8"	6~8mm	0	24	88.4
MK21-P0610-S18	2	G1/8"	6~8mm	6	18	88.4
MK21-S30	2	G1/8"	6~8mm	0	30	105.2
MK21-S36	2	G1/8"	6~8mm	0	36	125

Note:10A and signal(5A) can be freely combined, please contact customer service for details.

## Rotary Union Specifications

Parameter	Value
Passage	2 in 2 out, G1/8"
Max Pressure	1MPa(high pressure can be customized), Vacuum 0.01torr
Torque	Related to the connection size, please see the product selection table

## Electrical Data

Parameter	Power	Signal
Rated Voltage	0~240VAC/VDC	0~240VAC/VDC
Insulation Resistance	≥500MΩ/500VDC	≥500MΩ/500VDC
Lead Wires	AWG17#Teflon/PVC	AWG22#Teflon/PVC
Lead Length	Standard 300mm(adjustable on request)	
Dielectric Strength	500VAC@50Hz, 60s	
Electrical Noise	<0.01Ω	

## Mechanical Data

Parameter	Value
Working life	Over 10 Million Revs
Rated Rotating Speed	300RPM
Working Temperature	-30°C~80°C
Operating Humidity	0~85% RH
Contact Material	Precious Metal
Housing Material	Aluminium Alloy
Protection Grade	IP51

# LK23 SERIES

## 2 passages Pneumatic Rotary Union--Can combine electric wires

LK23 series is 2 passages Pneumatic Rotary Union(Can combine electric wires), with connection size G3/8", compact size, light weight, low torque, Also optional for transmitting power line, signal line, industrial bus, control line, Electromagnetic valve, induction line, etc.; Standard installation is flange mounting. Media Types: compressed Air/Gas, vacuum, etc.

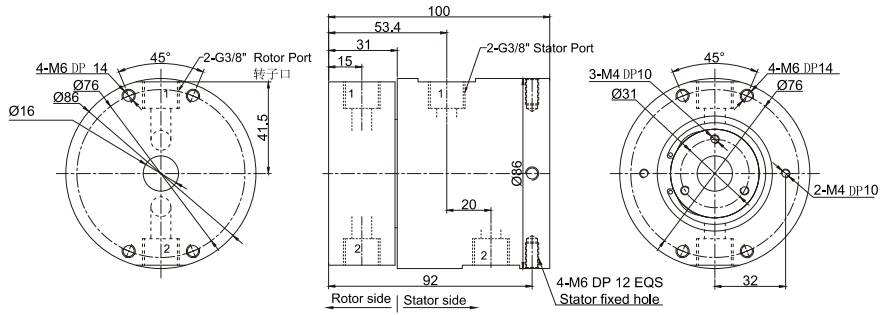
### Product images



The pictures are for reference only

As the signal pathway increases or the combination of light and electricity results in changes in the appearance and size of the product, the actual product shall prevail.

## LK23 Series Dimensions

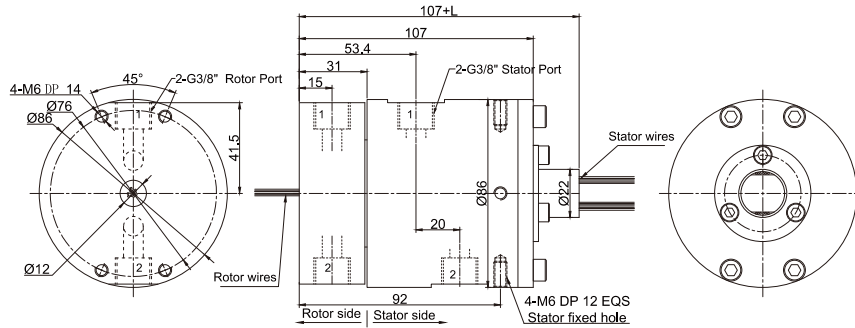


Lk23 rotary union only for pneumatic (2 in 2 out, connection size G3/8")

## Parts List

Model	Passages	Connection Size	Adaptive tube
Lk23	2	G3/8"	10~12mm

## LK23S Series Dimensions

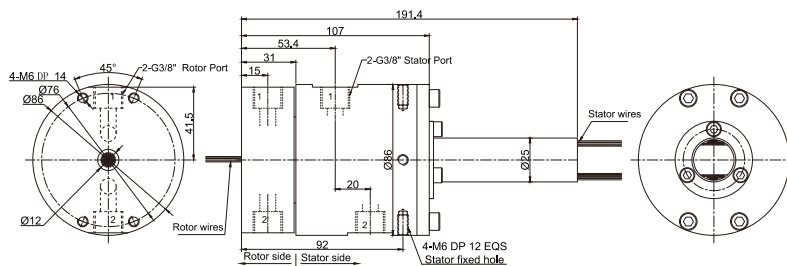


LK23S-S12(S18, S24, S36) 2 in 2 out, connection size G3/8"+12~36 wires x signal(2A)

## Parts List

Model	Passages	Connection Size	Adaptive tube	Signal(2A)	L(mm)
MK23S-S12	2	G3/8"	10~12mm	12	22.5
MK23S-S18	2	G3/8"	10~12mm	18	29.5
MK23S-S24	2	G3/8"	10~12mm	24	40.1
MK23S-S36	2	G3/8"	10~12mm	36	53.8

## LK23S-S56 Series Dimensions

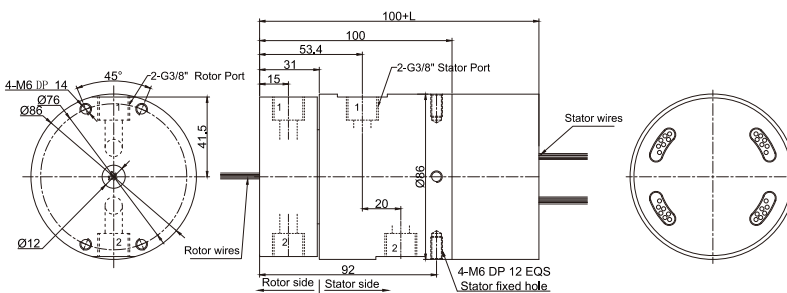


2 in 2 out, connection size G3/8"

## Parts List

Model	Passages	Connection Size	Adaptive tube	Signal(2A)
MK23S-S56	2	G3/8"	10~12mm	56

## MK23-PXX-SXX Series Dimensions



2 in 2 out, connection size G3/8" + signal(5A)/10A

## Parts List

Model	Passages	Connection Size	Adaptive tube	10A	Signal(5A)	L(mm)
MK23-P0610	2	G3/8"	10~12mm	6	0	45.2
MK23-S06	2	G3/8"	10~12mm	0	6	45.2
MK23-P1210	2	G3/8"	10~12mm	12	0	65.6
MK23-P0610-S06	2	G3/8"	10~12mm	6	6	65.6
MK23-S12	2	G3/8"	10~12mm	0	12	65.6
MK23-P1810	2	G3/8"	10~12mm	18	0	86
MK23-P0610-S12	2	G3/8"	10~12mm	6	12	86
MK23-P1210-S06	2	G3/8"	10~12mm	12	6	86

Model	Passages	Connection Size	Adaptive tube	10A	Signal(5A)	L(mm)
MK23-S18	2	G3/8"	10~12mm	0	18	86
MK23-S24	2	G3/8"	10~12mm	0	24	106.4
MK23-P0610-S18	2	G3/8"	10~12mm	6	18	106.4
MK23-S30	2	G3/8"	10~12mm	0	30	126.8
MK23-S36	2	G3/8"	10~12mm	0	36	150.2

Note:10A and signal(5A) can be freely combined, please contact customer service for details.

## Rotary Union Specifications

Parameter	Value
Passage	2 in 2 out, G3/8"
Max Pressure	1MPa(high pressure can be customized), Vacuum 0.01torr
Torque	Related to the connection size, please see the product selection table

## Electrical Data

Parameter	Power	Signal
Rated Voltage	0~440VAC/VDC	0~440VAC/VDC
Insulation Resistance	≥1000MΩ/500VDC	≥1000MΩ/500VDC
Lead Wires	AWG16#Teflon/PVC	AWG22#Teflon/PVC
Lead Length	Standard 300mm(adjustable on request)	
Dielectric Strength	500VAC@50Hz, 60s	
Electrical Noise	<0.01Ω	

## Mechanical Data

Parameter	Value
Working life	Over 10 Million Revs
Rated Rotating Speed	300RPM
Working Temperature	-30°C~80°C
Operating Humidity	0~85% RH
Contact Material	Precious Metal
Housing Material	Aluminium Alloy
Protection Grade	IP51

# LK41 SERIES

## 4 passages Pneumatic Rotary Union--Can combine electric wires

LK41 series is 4 passages Pneumatic Rotary Union(Can combine electric wires), with connection size G1/8", compact size, light weight, low torque, Also optional for transmitting power line, signal line, industrial bus, control line, Electromagnetic valve, induction line, etc.; Standard installation is flange mounting. Media Types: compressed Air/Gas, vacuum, etc.

### Product images

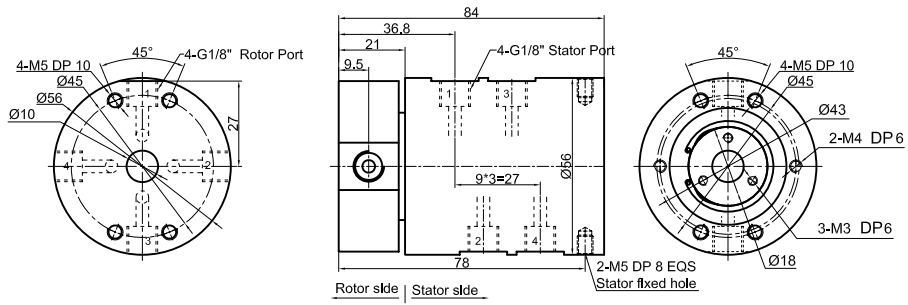


The pictures are for reference only

As the signal pathway increases or the combination of light and electricity results in changes in the appearance and size of the product, the actual product shall prevail.



## LK41 Series Dimensions

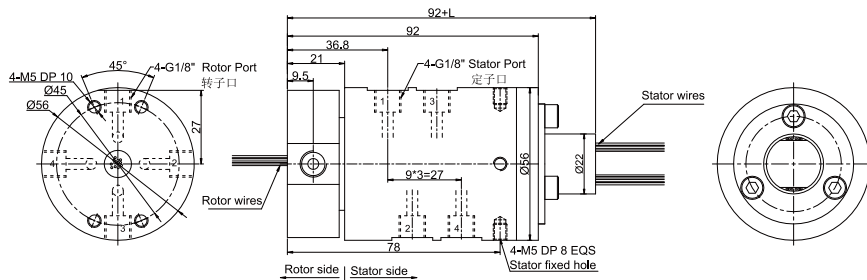


Lk41 (rotary union only for pneumatic) drawing (4 in 4 out, connection size G1/8")

## Parts List

Model	Passages	Connection Size	Adaptive tube
Lk41	4	G1/8"	6~8mm

## LK41S Series Dimensions

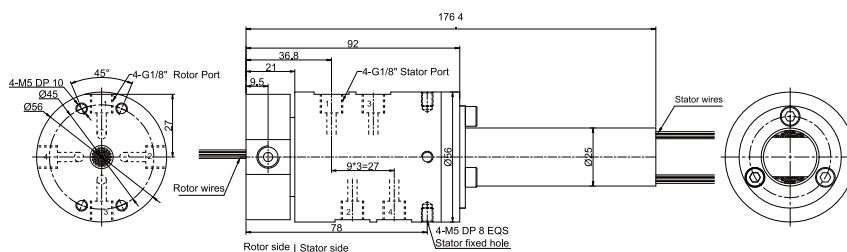


LK41S-S12 (S18,S24,S36) drawing 4 in 4 out, connection size G1/8" + 12~36 wires x signal(2A)

## Parts List

Model	Passages	Connection Size	Adaptive tube	Signal(2A)	L(mm)
LK41S-S12	4	G1/8"	6~8mm	12	22.5
LK41S-S18	4	G1/8"	6~8mm	18	29.5
LK41S-S24	4	G1/8"	6~8mm	24	40.1
LK41S-S36	4	G1/8"	6~8mm	36	53.8

## LK41S-S56 Series Dimensions

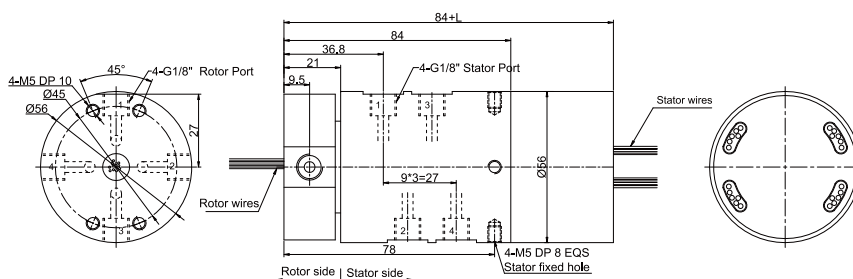


LK41S-S56 drawing 4 in 4 out, connection size G1/8"

## Parts List

Model	Passages	Connection Size	Adaptive tube	Signal(2A)
LK41S-S56	4	G1/8"	6~8mm	56

## LK41-PXX-SXX Series Dimensions



LK41-PXX-SXX drawing 4 in 4 out, connection size G1/8"+signal(5A)/10A

## Parts List

Model	Passages	Connection Size	Adaptive tube	10A	Signal(5A)	L(mm)
LK41-P0610	4	G1/8"	6~8mm	6	0	38
LK41-S06	4	G1/8"	6~8mm	0	6	38
LK41-P1210	4	G1/8"	6~8mm	12	0	54.8
LK41-P0610-S06	4	G1/8"	6~8mm	6	6	54.8
LK41-S12	4	G1/8"	6~8mm	0	12	54.8
LK41-P1810	4	G1/8"	6~8mm	18	0	71.5
LK41-P0610-S12	4	G1/8"	6~8mm	6	12	71.5
LK41-P1210-S06	4	G1/8"	6~8mm	12	6	71.5

Model	Passages	Connection Size	Adaptive tube	10A	Signal(5A)	L(mm)
LK41-S18	4	G1/8"	6~8mm	0	18	71.5
LK41-S24	4	G1/8"	6~8mm	0	24	88.4
LK41-P0610-S18	4	G1/8"	6~8mm	6	18	88.4
LK41-S30	4	G1/8"	6~8mm	0	30	105.2
LK41-S36	4	G1/8"	6~8mm	0	36	125

Note:10A and signal(5A) can be freely combined, please contact customer service for details.

## Rotary Union Specifications

Parameter	Value
Passage	4 in 4 out, G1/8"
Max Pressure	1MPa(high pressure can be customized), Vacuum 0.01torr
Torque	Related to the connection size, please see the product selection table

## Electrical Data

Parameter	Power	Signal
Rated Voltage	0~240VAC/VDC	0~240VAC/VDC
Insulation Resistance	≥500MΩ/500VDC	≥500MΩ/500VDC
Lead Wires	AWG17#Teflon/PVC	AWG22#Teflon/PVC
Lead Length	Standard 300mm(adjustable on request)	
Dielectric Strength	500VAC@50Hz, 60s	
Electrical Noise	<0.01Ω	

## Mechanical Data

Parameter	Value
Working life	Over 10 Million Revs
Rated Rotating Speed	300RPM
Working Temperature	-30°C~80°C
Operating Humidity	0~85% RH
Contact Material	Precious Metal
Housing Material	Aluminium Alloy
Protection Grade	IP51

# LK43 SERIES

## 4 passages Pneumatic Rotary Union--Can combine electric wires

LK43 series is 4 passages Pneumatic Rotary Union(Can combine electric wires), with connection size G3/8", compact size, light weight, low torque, Also optional for transmitting power line, signal line, industrial bus, control line, Electromagnetic valve, induction line, etc.; Standard installation is flange mounting. Media Types: compressed Air/Gas, vacuum, etc.

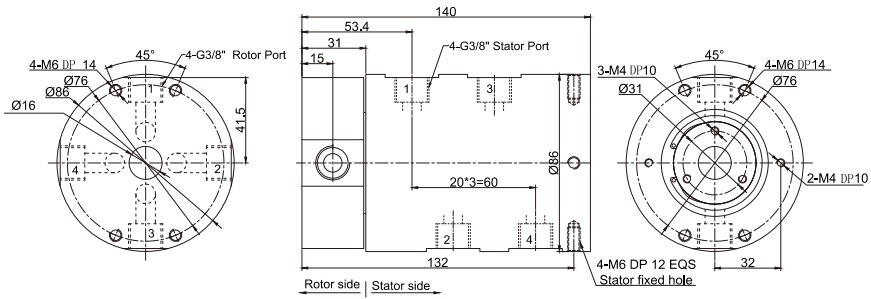
### Product images



The pictures are for reference only

As the signal pathway increases or the combination of light and electricity results in changes in the appearance and size of the product, the actual product shall prevail.

## LK43 Series Dimensions

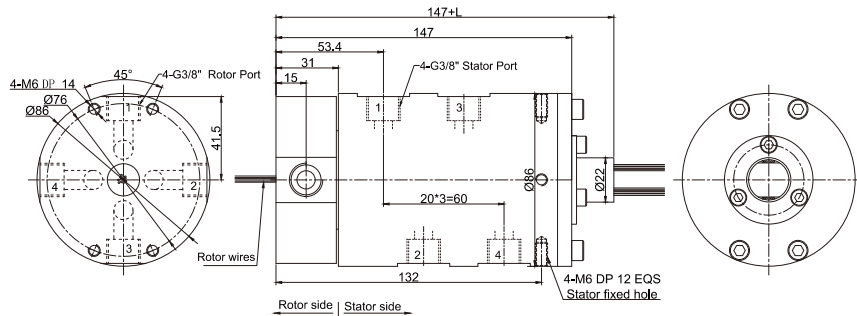


LK43 (rotary union only for pneumatic) drawing (4 in 4 out, connection size G3/8")

## Parts List

Model	Passages	Connection Size	Adaptive tube
Lk43	4	G3/8"	10~12mm

## LK43S Series Dimensions

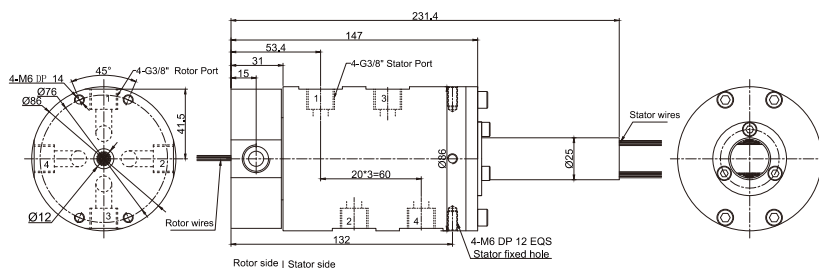


LK43S-S12 (S18, S24, S36) drawing 4 in 4 out, connection size G3/8" + 12~36 wires x signal(2A)

## Parts List

Model	Passages	Connection Size	Adaptive tube	Signal(2A)	L(mm)
LK43S-S12	4	G3/8"	10~12mm	12	22.5
LK43S-S18	4	G3/8"	10~12mm	18	29.5
LK43S-S24	4	G3/8"	10~12mm	24	40.1
LK43S-S36	4	G3/8"	10~12mm	36	53.8

## LK43S-S56 Series Dimensions

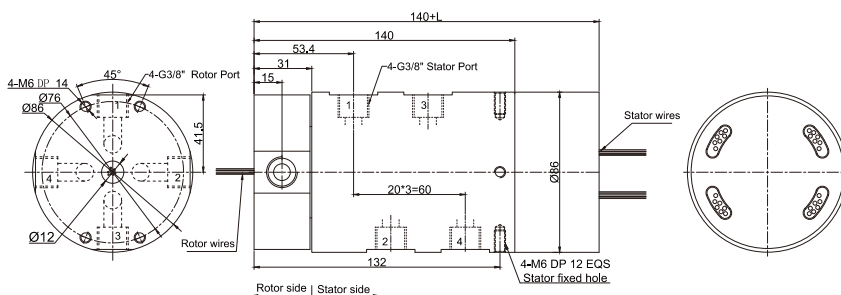


LK43S-S56 drawing 4 in 4 out, connection size G3/8"

## Parts List

Model	Passages	Connection Size	Adaptive tube	Signal(2A)
LK43S-S56	4	G3/8"	10~12mm	56

## LK43-PXX-SXX Series Dimensions



LK43-PXX-SXX drawing 4 in 4 out, connection size G3/8" + signal(5A)/10A

## Parts List

Model	Passages	Connection Size	Adaptive tube	10A	Signal(5A)	L(mm)
LK43-P0610	4	G3/8"	10~12mm	6	0	45.2
LK43-S06	4	G3/8"	10~12mm	0	6	45.2
LK43-P1210	4	G3/8"	10~12mm	12	0	65.6
LK43-P0610-S06	4	G3/8"	10~12mm	6	6	65.6
LK43-S12	4	G3/8"	10~12mm	0	12	65.6
LK43-P1810	4	G3/8"	10~12mm	18	0	86
LK43-P0610-S12	4	G3/8"	10~12mm	6	12	86
LK43-P1210-S06	4	G3/8"	10~12mm	12	6	86

Model	Passages	Connection Size	Adaptive tube	10A	Signal(5A)	L(mm)
LK43-S18	4	G3/8"	10~12mm	0	18	86
LK43-S24	4	G3/8"	10~12mm	0	24	106.4
LK43-P0610-S18	4	G3/8"	10~12mm	6	18	106.4
LK43-S30	4	G3/8"	10~12mm	0	30	126.8
LK43-S36	4	G3/8"	10~12mm	0	36	150.2

Note:10A and signal(5A) can be freely combined, please contact customer service for details.

## Rotary Union Specifications

Parameter	Value
Passage	4 in 4 out, G3/8"
Max Pressure	1MPa(high pressure can be customized), Vacuum 0.01torr
Torque	Related to the connection size, please see the product selection table

## Electrical Data

Parameter	Power	Signal
Rated Voltage	0~440VAC/VDC	0~440VAC/VDC
Insulation Resistance	≥1000MΩ/500VDC	≥1000MΩ/500VDC
Lead Wires	AWG16#Teflon/PVC	AWG22#Teflon/PVC
Lead Length	Standard 300mm(adjustable on request)	
Dielectric Strength	500VAC@50Hz, 60s	
Electrical Noise	<0.01Ω	

## Mechanical Data

Parameter	Value
Working life	Over 10 Million Revs
Rated Rotating Speed	300RPM
Working Temperature	-30°C~80°C
Operating Humidity	0~85% RH
Contact Material	Precious Metal
Housing Material	Aluminium Alloy
Protection Grade	IP51

# LK61 SERIES

## 6 passages Pneumatic Rotary Union--Can combine electric wires

LK61 series is 6 passages Pneumatic Rotary Union(Can combine electric wires), with connection size G1/8", compact size, light weight, low torque, Also optional for transmitting power line, signal line, industrial bus, control line, Electromagnetic valve, induction line, etc.; Standard installation is flange mounting.  
Media Types: compressed Air/Gas, vacuum, etc.

### Product images

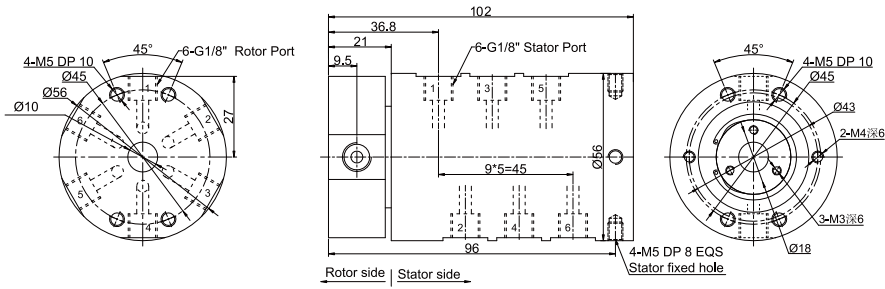


The pictures are for reference only

As the signal pathway increases or the combination of light and electricity results in changes in the appearance and size of the product, the actual product shall prevail.



## LK61 Series Dimensions

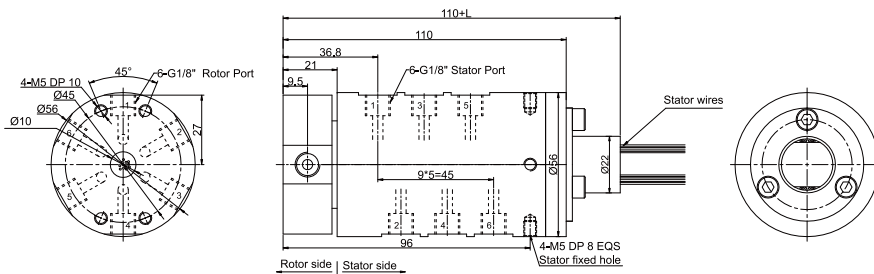


LK61 (rotary union only for pneumatic) drawing (6 in 6 out, connection size G1/8")

## Parts List

Model	Passages	Connection Size	Adaptive tube
Lk61	6	G1/8"	6~8mm

## LK61S Series Dimensions

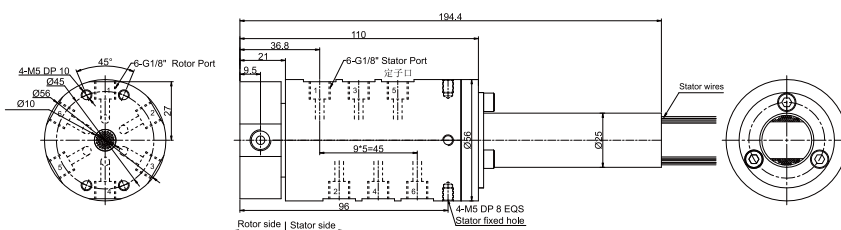


LK61S-S12 (S18.S24.S36) drawing 6 in 6 out, connection size G1/8" +12~36 wires x signal(2A)

## Parts List

Model	Passages	Connection Size	Adaptive tube	Signal(2A)	L(mm)
LK61S-S12	6	G1/8"	6~8mm	12	22.5
LK61S-S18	6	G1/8"	6~8mm	18	29.5
LK61S-S24	6	G1/8"	6~8mm	24	40.1
LK61S-S36	6	G1/8"	6~8mm	36	53.8

## LK61S-S56 Series Dimensions

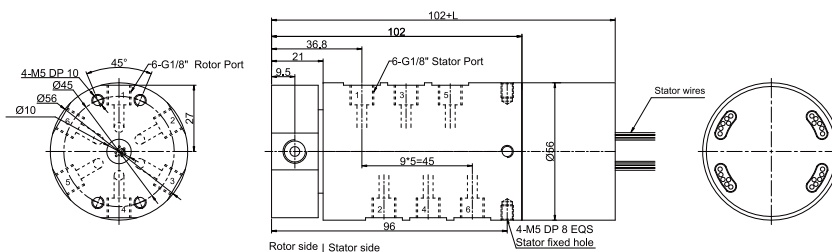


LK61S-S56 drawing 6 in 6 out, connection size G1/8"

## Parts List

Model	Passages	Connection Size	Adaptive tube	Signal(2A)
LK61S-S56	6	G1/8"	6~8mm	56

## LK61-PXX-SXX Series Dimensions



LK61-PXX-SXX drawing 6 in 6 out, connection size G1/8"+signal(5A)/10A

## Parts List

Model	Passages	Connection Size	Adaptive tube	10A	Signal(5A)	L(mm)
LK61-P0610	6	G1/8"	6~8mm	6	0	38
LK61-S06	6	G1/8"	6~8mm	0	6	38
LK61-P1210	6	G1/8"	6~8mm	12	0	54.8
LK61-P0610-S06	6	G1/8"	6~8mm	6	6	54.8
LK61-S12	6	G1/8"	6~8mm	0	12	54.8
LK61-P1810	6	G1/8"	6~8mm	18	0	71.5
LK61-P0610-S12	6	G1/8"	6~8mm	6	12	71.5
LK61-P1210-S06	6	G1/8"	6~8mm	12	6	71.5

Model	Passages	Connection Size	Adaptive tube	10A	Signal(5A)	L(mm)
LK61-S18	6	G1/8"	6~8mm	0	18	71.5
LK61-S24	6	G1/8"	6~8mm	0	24	88.4
LK61-P0610-S18	6	G1/8"	6~8mm	6	18	88.4
LK61-S30(2A)	6	G1/8"	6~8mm	0	30	105.2
LK61-S36(2A)	6	G1/8"	6~8mm	0	36	125

Note:10A and signal(5A) can be freely combined, please contact customer service for details.

## Rotary Union Specifications

Parameter	Value
Passage	6 in 6 out, G1/8"
Max Pressure	1MPa(high pressure can be customized), Vacuum 0.01torr
Torque	Related to the connection size, please see the product selection table

## Electrical Data

Parameter	Power	Signal
Rated Voltage	0~240VAC/VDC	0~240VAC/VDC
Insulation Resistance	≥500MΩ/500VDC	≥500MΩ/500VDC
Lead Wires	AWG17#Teflon/PVC	AWG22#Teflon/PVC
Lead Length	Standard 300mm(adjustable on request)	
Dielectric Strength	500VAC@50Hz, 60s	
Electrical Noise	<0.01Ω	

## Mechanical Data

Parameter	Value
Working life	Over 10 Million Revs
Rated Rotating Speed	300RPM
Working Temperature	-30°C~80°C
Operating Humidity	0~85% RH
Contact Material	Precious Metal
Housing Material	Aluminium Alloy
Protection Grade	IP51

## LK81 SERIES

---

### 8 passages Pneumatic Rotary Union--Can combine electric wires

LK81 series is 8 passages Pneumatic Rotary Union(Can combine electric wires), with connection size G1/8", compact size, light weight, low torque, Also optional for transmitting power line, signal line, industrial bus, control line, Electromagnetic valve, induction line, etc.; Standard installation is flange mounting.

Media Types: compressed Air/Gas, vacuum, etc.

---

### Product images

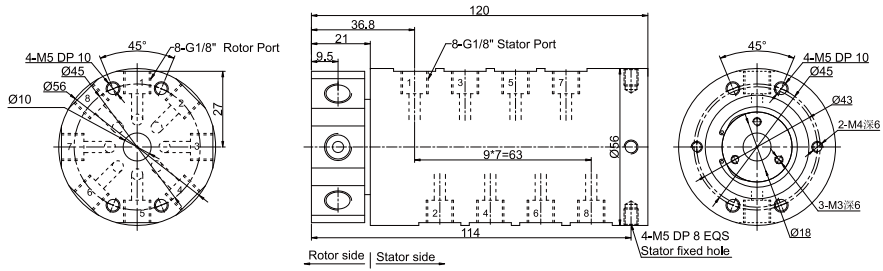


The pictures are for reference only

As the signal pathway increases or the combination of light and electricity results in changes in the appearance and size of the product, the actual product shall prevail.

---

## LK83 Series Dimensions

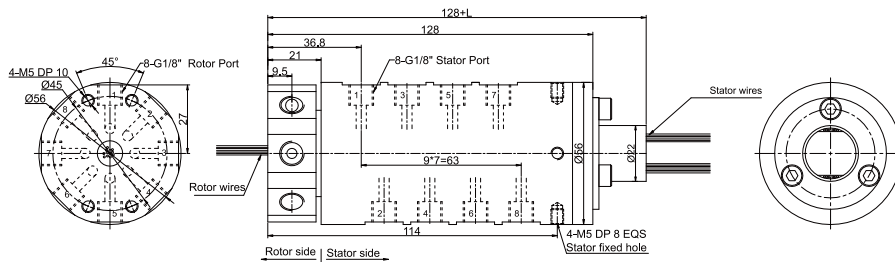


LK81 (rotary union only for pneumatic) drawing (8 in 8 out, connection size G1/8")

## Parts List

Model	Passages	Connection Size	Adaptive tube
Lk81	8	G1/8"	6~8mm

## LK81S Series Dimensions

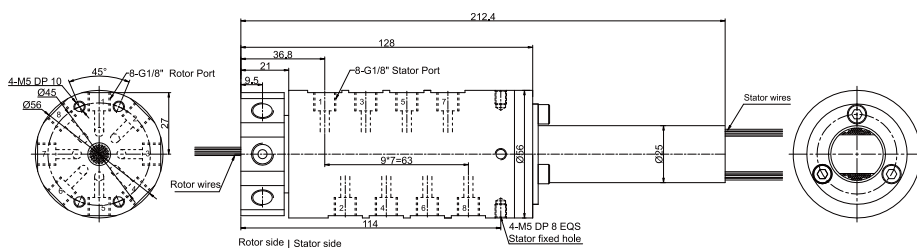


LK81S-S12(S18, S24, S36) drawing 8 in 8 out, connection size G1/8"+12~36 wires x signal(2A)

## Parts List

Model	Passages	Connection Size	Adaptive tube	Signal(2A)	L(mm)
LK81S-S12	8	G1/8"	6~8mm	12	22.5
LK81S-S18	8	G1/8"	6~8mm	18	29.5
LK81S-S24	8	G1/8"	6~8mm	24	40.1
LK81S-S38	8	G1/8"	6~8mm	36	53.8

## LK81S-S56 Series Dimensions

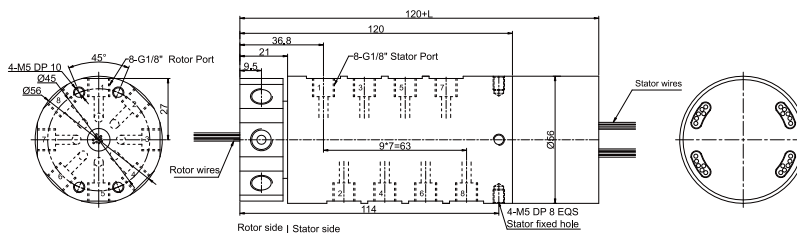


LK81S-S56 drawing 8 in 8 out, connection size G1/8"

## Parts List

Model	Passages	Connection Size	Adaptive tube	Signal(2A)
LK81S-S56	8	G1/8"	6~8mm	56

## LK81-PXX-SXX Series Dimensions



LK81-PXX-SXX drawing 8 in 8 out, connection size G1/8"+signal(5A)/10A

## Parts List

Model	Passages	Connection Size	Adaptive tube	10A	Signal(5A)	L(mm)
MK81-P0610	8	G1/8"	6~8mm	6	0	38
MK81-S06	8	G1/8"	6~8mm	0	6	38
MK81-P1210	8	G1/8"	6~8mm	12	0	54.8
MK81-P0610-S06	8	G1/8"	6~8mm	6	6	54.8
MK81-S12	8	G1/8"	6~8mm	0	12	54.8
MK81-P1810	8	G1/8"	6~8mm	18	0	71.5
MK81-P0610-S12	8	G1/8"	6~8mm	6	12	71.5
MK81-P1210-S06	8	G1/8"	6~8mm	12	6	71.5

Model	Passages	Connection Size	Adaptive tube	10A	Signal(5A)	L(mm)
MK81-S18	8	G1/8"	6~8mm	0	18	71.5
MK81-S24	8	G1/8"	6~8mm	0	24	88.4
MK81-P0610-S18	8	G1/8"	6~8mm	6	18	88.4
MK81-S30(2A)	8	G1/8"	6~8mm	0	30	105.2
MK81-S36(2A)	8	G1/8"	6~8mm	0	36	125

Note:10A and signal(5A) can be freely combined, please contact customer service for details.

## Rotary Union Specifications

Parameter	Value
Passage	8 in 8 out, G1/8"
Max Pressure	1MPa(high pressure can be customized), Vacuum 0.01torr
Torque	Related to the connection size, please see the product selection table

## Electrical Data

Parameter	Power	Signal
Rated Voltage	0~240VAC/VDC	0~240VAC/VDC
Insulation Resistance	≥500MΩ/500VDC	≥500MΩ/500VDC
Lead Wires	AWG17#Teflon/PVC	AWG22#Teflon/PVC
Lead Length	Standard 300mm(adjustable on request)	
Dielectric Strength	500VAC@50Hz, 60s	
Electrical Noise	<0.01Ω	

## Mechanical Data

Parameter	Value
Working life	Over 10 Million Revs
Rated Rotating Speed	300RPM
Working Temperature	-30°C~80°C
Operating Humidity	0~85% RH
Contact Material	Precious Metal
Housing Material	Aluminium Alloy
Protection Grade	IP51

# LK83 SERIES

## 8 passages Pneumatic Rotary Union--Can combine electric wires

LK83 series is 8 passages Pneumatic Rotary Union(Can combine electric wires), with connection size G3/8", compact size, light weight, low torque, Also optional for transmitting power line, signal line, industrial bus, control line, Electromagnetic valve, induction line, etc.; Standard installation is flange mounting.  
Media Types: compressed Air/Gas, vacuum, etc.

### Product images

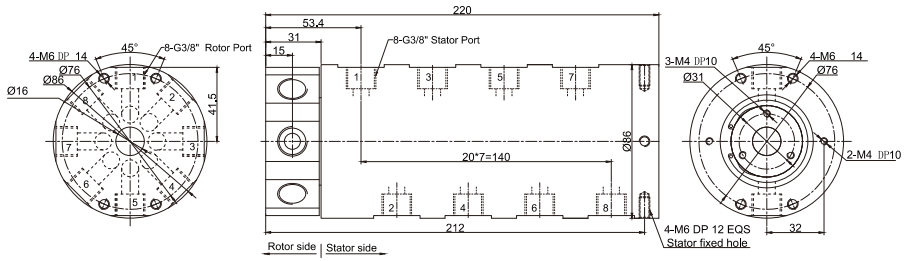


The pictures are for reference only

As the signal pathway increases or the combination of light and electricity results in changes in the appearance and size of the product, the actual product shall prevail.



## LK83 Series Dimensions

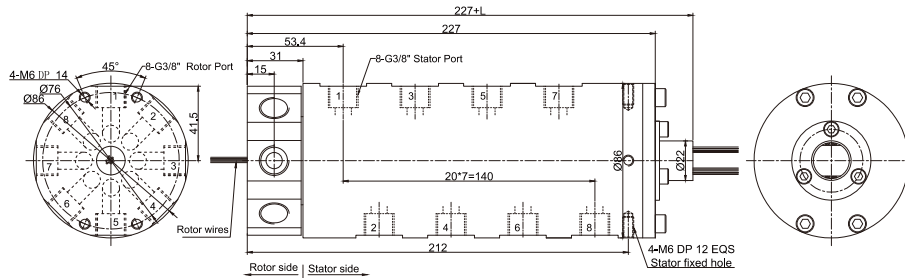


LK83 (rotary union only for pneumatic) drawing (8 in 8 out, connection size G3/8")

## Parts List

Model	Passages	Connection Size	Adaptive tube
Lk83	8	G3/8"	10~12mm

## LK83S Series Dimensions

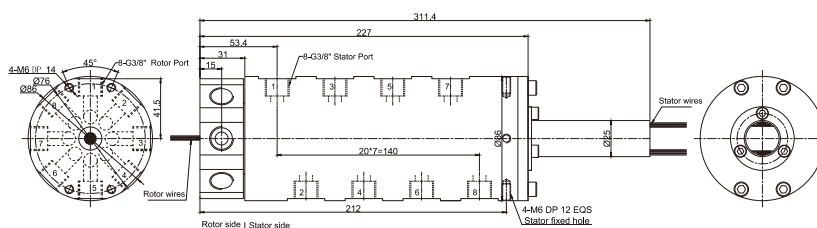


LK83S-S12 (S18.S24.S36) drawing 8 in 8 out, connection size G3/8" + 12~36 wires x signal(2A)

## Parts List

Model	Passages	Connection Size	Adaptive tube	Signal(2A)	L(mm)
LK83S-S12	8	G3/8"	10~12mm	12	22.5
LK83S-S18	8	G3/8"	10~12mm	18	29.5
LK83S-S24	8	G3/8"	10~12mm	24	40.1
LK83S-S36	8	G3/8"	10~12mm	36	53.8

## LK83S-S56 Series Dimensions

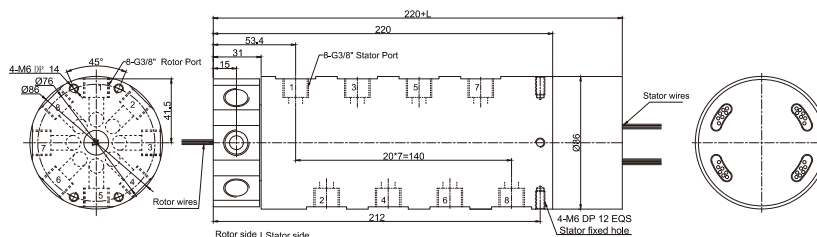


LK83S-S56 drawing 8 in 8 out, connection size G3/8"

## Parts List

Model	Passages	Connection Size	Adaptive tube	Signal(2A)
LK83S-S56	8	G3/8"	10~12mm	56

## LK83-PXX-SXX Series Dimensions



LK83-PXX-SXX drawing 8 in 8 out, connection size G3/8"+signal(5A)/10A

## Parts List

Model	Passages	Connection Size	Adaptive tube	10A	Signal(5A)	L(mm)
LK83-P0610	8	G3/8"	10~12mm	6	0	45.2
LK83-S06	8	G3/8"	10~12mm	0	6	45.2
LK83-P1210	8	G3/8"	10~12mm	12	0	65.6
LK83-P0610-S06	8	G3/8"	10~12mm	6	6	65.6
LK83-S12	8	G3/8"	10~12mm	0	12	65.6
LK83-P1810	8	G3/8"	10~12mm	18	0	86
LK83-P0610-S12	8	G3/8"	10~12mm	6	12	86
LK83-P1210-S06	8	G3/8"	10~12mm	12	6	86

Model	Passages	Connection Size	Adaptive tube	10A	Signal(5A)	L(mm)
LK83-S18	8	G3/8"	10~12mm	0	18	86
LK83-S24	8	G3/8"	10~12mm	0	24	106.4
LK83-P0610-S18	8	G3/8"	10~12mm	6	18	106.4
LK83-S30	8	G3/8"	10~12mm	0	30	126.8
LK83-S36	8	G3/8"	10~12mm	0	36	150.2

Note:10A and signal(5A) can be freely combined, please contact customer service for details.

## Rotary Union Specifications

Parameter	Value
Passage	8 in 8 out, G3/8"
Max Pressure	1MPa(high pressure can be customized), Vacuum 0.01torr
Torque	Related to the connection size, please see the product selection table

## Electrical Data

Parameter	Power	Signal
Rated Voltage	0~440VAC/VDC	0~440VAC/VDC
Insulation Resistance	≥1000MΩ/500VDC	≥1000MΩ/500VDC
Lead Wires	AWG16#Teflon/PVC	AWG22#Teflon/PVC
Lead Length	Standard 300mm(adjustable on request)	
Dielectric Strength	500VAC@50Hz, 60s	
Electrical Noise	<0.01Ω	

## Mechanical Data

Parameter	Value
Working life	Over 10 Million Revs
Rated Rotating Speed	300RPM
Working Temperature	-30°C~80°C
Operating Humidity	0~85% RH
Contact Material	Precious Metal
Housing Material	Aluminium Alloy
Protection Grade	IP51

# LK121 SERIES

---

## 12 passages Pneumatic Rotary Union--Can combine electric wires

LK121 series is 12 passages Pneumatic Rotary Union(Can combine electric wires), with connection size G1/8", compact size, light weight, low torque, Also optional for transmitting power line, signal line, industrial bus, control line, Electromagnetic valve, induction line, etc.; Standard installation is flange mounting.

Media Types: compressed Air/Gas, vacuum, etc.

---

## Product images

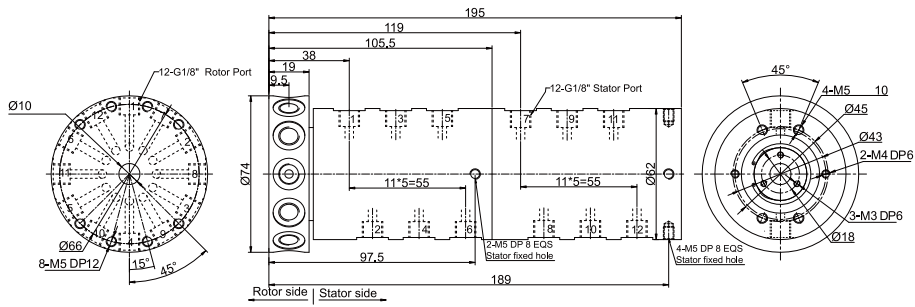


The pictures are for reference only

As the signal pathway increases or the combination of light and electricity results in changes in the appearance and size of the product, the actual product shall prevail.

---

## LK121 Series Dimensions

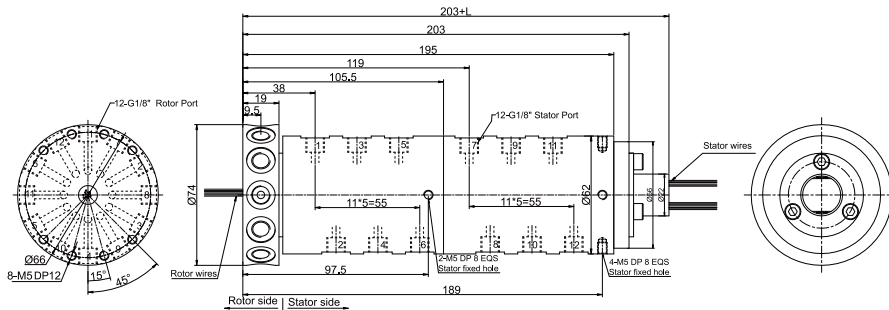


LK121 (rotary union only for pneumatic) drawing (12 in 12 out, connection size G1/8")

## Parts List

Model	Passages	Connection Size	Adaptive tube
Lk121	12	G1/8"	6~8mm

## LK121S Series Dimensions

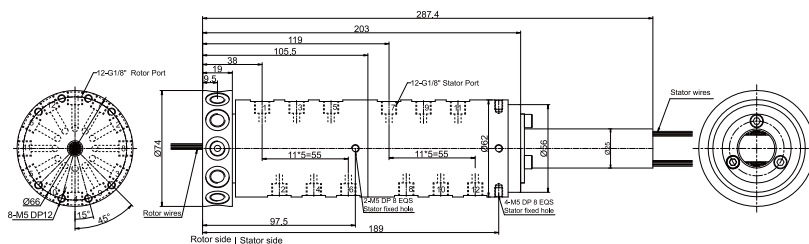


LK121S-S12 (S18.S24.S36) drawing 12 in 12 out, connection size G1/8" + 12~36 wires x signal(2A)

## Parts List

Model	Passages	Connection Size	Adaptive tube	Signal(2A)	L(mm)
LK121S-S12	12	G1/8"	6~8mm	12	22.5
LK121S-S18	12	G1/8"	6~8mm	18	29.5
LK121S-S24	12	G1/8"	6~8mm	24	40.1
LK121S-S36	12	G1/8"	6~8mm	36	53.8

## LK121S-S56 Series Dimensions

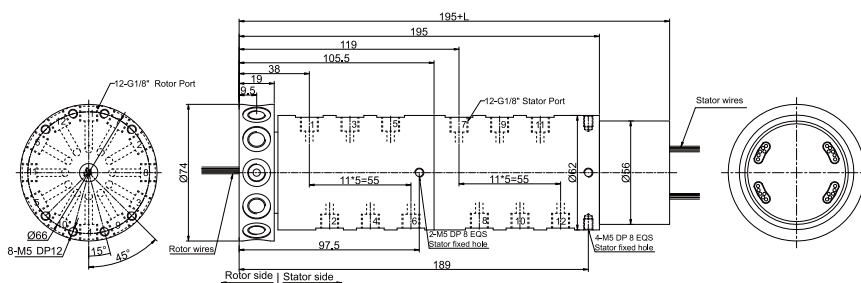


LK121S-S56 drawing 12 in 12 out, connection size G1/8"

### Parts List

Model	Passages	Connection Size	Adaptive tube	Signal(2A)
LK121S-S56	12	G1/8"	6~8mm	56

## LK121-PXX-SXX Series Dimensions



LK121-PXX-SXX drawing 12 in 12 out, connection size G1/8"+signal(5A)/10A

### Parts List

Model	Passages	Connection Size	Adaptive tube	10A	Signal(5A)	L(mm)
LK121-P0610	12	G1/8"	6~8mm	6	0	38
LK121-S06	12	G1/8"	6~8mm	0	6	38
LK121-P1210	12	G1/8"	6~8mm	12	0	54.8
LK121-P0610-S06	12	G1/8"	6~8mm	6	6	54.8
LK121-S12	12	G1/8"	6~8mm	0	12	54.8
LK121-P1810	12	G1/8"	6~8mm	18	0	71.5
LK121-P0610-S12	12	G1/8"	6~8mm	6	12	71.5
LK121-P1210-S06	12	G1/8"	6~8mm	12	6	71.5

Model	Passages	Connection Size	Adaptive tube	10A	Signal(5A)	L(mm)
LK121-S18	12	G1/8"	6~8mm	0	18	71.5
LK121-S24	12	G1/8"	6~8mm	0	24	88.4
LK121-P0610-S18	12	G1/8"	6~8mm	6	18	88.4
LK121-S30(2A)	12	G1/8"	6~8mm	0	30	105.2
LK121-S36(2A)	12	G1/8"	6~8mm	0	36	125

Note:10A and signal(5A) can be freely combined, please contact customer service for details.

## Rotary Union Specifications

Parameter	Value
Passage	12 in 12 out, G1/8"
Max Pressure	1MPa(high pressure can be customized), Vacuum 0.01torr
Torque	Related to the connection size, please see the product selection table

## Electrical Data

Parameter	Power	Signal
Rated Voltage	0~240VAC/VDC	0~240VAC/VDC
Insulation Resistance	≥500MΩ/500VDC	≥500MΩ/500VDC
Lead Wires	AWG17#Teflon/PVC	AWG22#Teflon/PVC
Lead Length	Standard 300mm(adjustable on request)	
Dielectric Strength	500VAC@50Hz, 60s	
Electrical Noise	<0.01Ω	

## Mechanical Data

Parameter	Value
Working life	Over 10 Million Revs
Rated Rotating Speed	300RPM
Working Temperature	-30°C~80°C
Operating Humidity	0~85% RH
Contact Material	Precious Metal
Housing Material	Aluminium Alloy
Protection Grade	IP51

# LK123 SERIES

## 12 passages Pneumatic Rotary Union--Can combine electric wires

LK123 series is 12 passages Pneumatic Rotary Union(Can combine electric wires), with connection size G3/8", compact size, light weight, low torque, Also optional for transmitting power line, signal line, industrial bus, control line, Electromagnetic valve, induction line, etc.; Standard installation is flange mounting.

Media Types: compressed Air/Gas, vacuum, etc.

### Product images

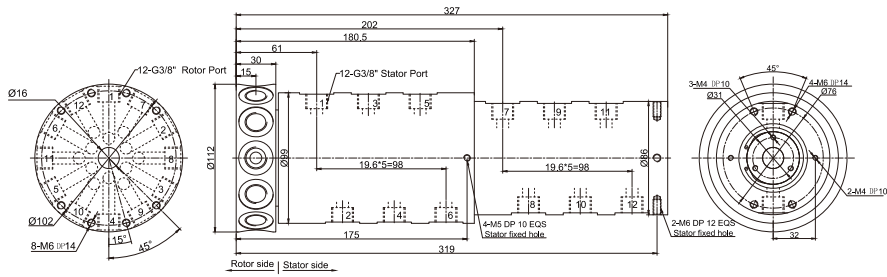


The pictures are for reference only

As the signal pathway increases or the combination of light and electricity results in changes in the appearance and size of the product, the actual product shall prevail.



## LK123 Series Dimensions

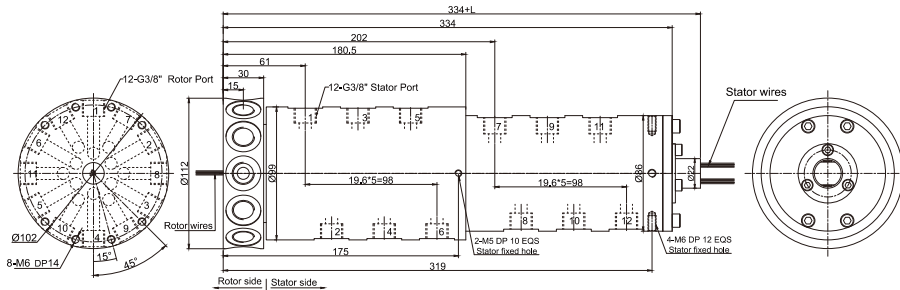


LK123 (rotary union only for pneumatic) drawing (12 in 12 out, connection size G3/8")

### Parts List

Model	Passages	Connection Size	Adaptive tube
Lk123	12	G3/8"	10~12mm

## LK123S Series Dimensions

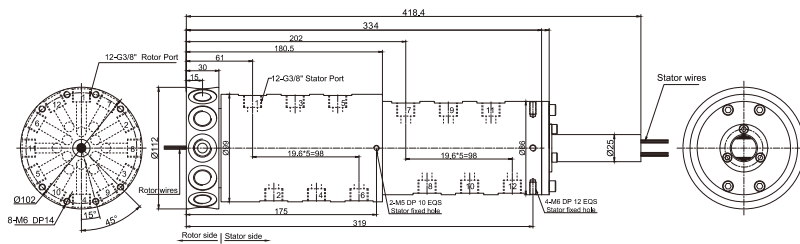


LK123S-S12 (S18, S24, S36) drawing 12 in 12 out, connection size G3/8" + 12~36 wires x signal(2A)

### Parts List

Model	Passages	Connection Size	Adaptive tube	Signal(2A)	L(mm)
LK123S-S12	12	G3/8"	10~12mm	12	22.5
LK123S-S18	12	G3/8"	10~12mm	18	29.5
LK123S-S24	12	G3/8"	10~12mm	24	40.1
LK123S-S36	12	G3/8"	10~12mm	36	53.8

## LK123S-S56 Series Dimensions

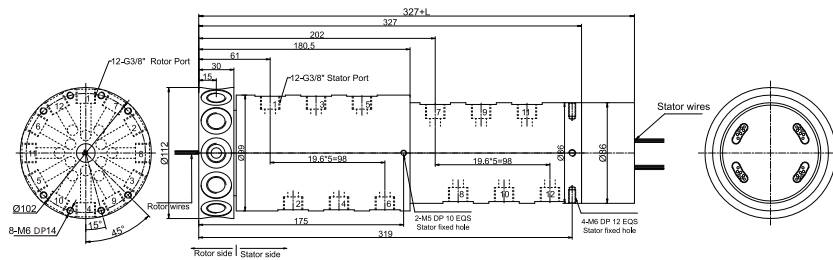


LK123S-S56 drawing 12 in 12 out, connection size G3/8"

### Parts List

Model	Passages	Connection Size	Adaptive tube	Signal(2A)
LK123S-S56	12	G3/8"	10~12mm	56

## LK123-PXX-SXX Series Dimensions



LMK123-PXX-SXX drawing 12 in 12 out, connection size G3/8" +signal(5A)/10A

### Parts List

Model	Passages	Connection Size	Adaptive tube	10A	Signal(5A)	L(mm)
LK123P0610	12	G3/8"	10~12mm	6	0	45.2
LK123-S06	12	G3/8"	10~12mm	0	6	45.2
LK123-P1210	12	G3/8"	10~12mm	12	0	65.6
LK123-P0610-S06	12	G3/8"	10~12mm	6	6	65.6
LK123-S12	12	G3/8"	10~12mm	0	12	65.6
LK123-P1810	12	G3/8"	10~12mm	18	0	86
LK123-P0610-S12	12	G3/8"	10~12mm	6	12	86
LK123-P1210-S06	12	G3/8"	10~12mm	12	6	86

Model	Passages	Connection Size	Adaptive tube	10A	Signal(5A)	L(mm)
LK123-S18	12	G3/8"	10~12mm	0	18	86
LK123-S24	12	G3/8"	10~12mm	0	24	106.4
LK123-P0610-S18	12	G3/8"	10~12mm	6	18	106.4
LK123-S30	12	G3/8"	10~12mm	0	30	126.8
LK123-S36	12	G3/8"	10~12mm	0	36	150.2

Note:10A and signal(5A) can be freely combined, please contact customer service for details.

## Rotary Union Specifications

Parameter	Value
Passage	12 in 12 out, G3/8"
Max Pressure	1MPa(high pressure can be customized), Vacuum 0.01torr
Torque	Related to the connection size, please see the product selection table

## Electrical Data

Parameter	Power	Signal
Rated Voltage	0~440VAC/VDC	0~440VAC/VDC
Insulation Resistance	≥1000MΩ/500VDC	≥1000MΩ/500VDC
Lead Wires	AWG16#Teflon/PVC	AWG22#Teflon/PVC
Lead Length	Standard 300mm(adjustable on request)	
Dielectric Strength	500VAC@50Hz, 60s	
Electrical Noise	<0.01Ω	

## Mechanical Data

Parameter	Value
Working life	Over 10 Million Revs
Rated Rotating Speed	300RPM
Working Temperature	-30°C~80°C
Operating Humidity	0~85% RH
Contact Material	Precious Metal
Housing Material	Aluminium Alloy
Protection Grade	IP51

# Lk161 SERIES

## 16 passages Pneumatic Rotary Union--Can combine electric wires

LK161 series is 16 passages Pneumatic Rotary Union(Can combine electric wires), with connection size G1/8", compact size, light weight, low torque, Also optional for transmitting power line, signal line, industrial bus, control line, Electromagnetic valve, induction line, etc.; Standard installation is flange mounting.

Media Types: compressed Air/Gas, vacuum, etc.

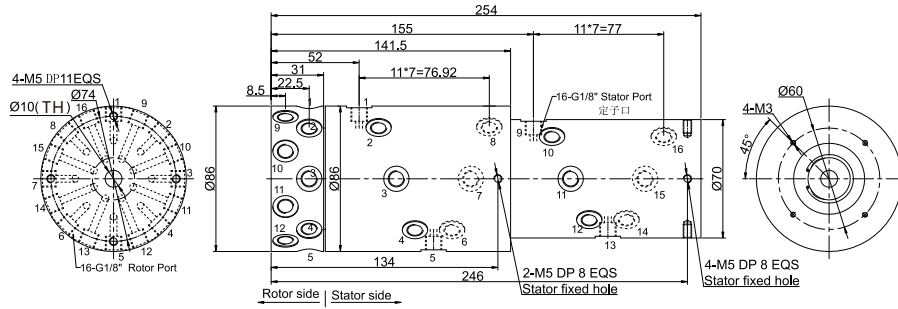
## Product images



The pictures are for reference only

As the signal pathway increases or the combination of light and electricity results in changes in the appearance and size of the product, the actual product shall prevail.

## LK161 Series Dimensions

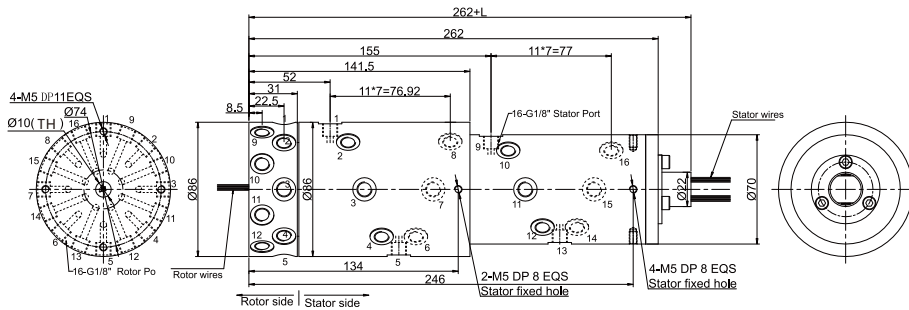


LK161 (rotary union only for pneumatic) drawing (16 in 16 out, connection size G1/8")

## Parts List

Model	Passages	Connection Size	Adaptive tube
LK161	16	G1/8"	6mm

## LK161S Series Dimensions

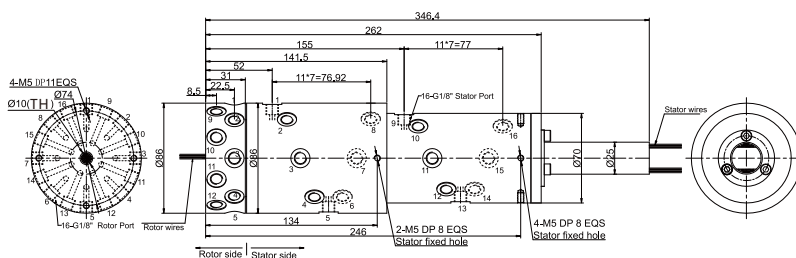


LK161S-S12 (S18, S24, S36) drawing 16 in 16 out, connection size G1/8" + 12~36 wires x signal(2A)

## Parts List

Model	Passages	Connection Size	Adaptive tube	Signal(2A)	L(mm)
LK161S-S12	16	G1/8"	6mm	12	22.5
LK161S-S18	16	G1/8"	6~8mm	18	29.5
LK161S-S24	16	G1/8"	6~8mm	24	40.1
LK161S-S36	16	G1/8"	6~8mm	36 ~8mm	53.8

## LK161S-S56 Series Dimensions

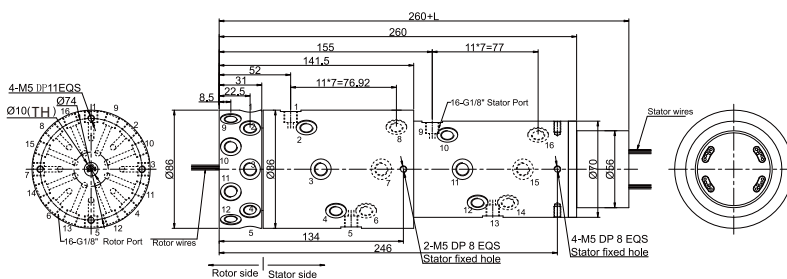


LK161S-S56 drawing 16 in 16 out, connection size G1/8"

## Parts List

Model	Passages	Connection Size	Adaptive tube	Signal(2A)
LK161S-S56	16	G1/8"	6mm	56~8mm

## LK161-PXX-SXX Series Dimensions



LK161-PXX-SXX drawing 16 in 16 out, connection size G1/8" +signal(5A)/10A

## Parts List

Model	Passages	Connection Size	Adaptive tube	10A	Signal(5A)	L(mm)
LK161-P0610	16	G1/8"	6~8mm	6	0	38
LK161-S06	16	G1/8"	6~8mm	0	6	38
LK161-P1210	16	G1/8"	6~8mm	12	0	54.8
LK161-P0610-S06	16	G1/8"	6~8mm	6	6	54.8
LK161-S12	16	G1/8"	6~8mm	0	12	54.8
LK161-P1810	16	G1/8"	6~8mm	18	0	71.5
LK161-P0610-S12	16	G1/8"	6~8mm	6	12	71.5
LK161-P1210-S06	16	G1/8"	6~8mm	12	6	71.5

Model	Passages	Connection Size	Adaptive tube	10A	Signal(5A)	L(mm)
LK161-S18	16	G1/8"	6~8mm	0	18	71.5
LK161-S24	16	G1/8"	6~8mm	0	24	88.4
LK161-P0610-S18	16	G1/8"	6~8mm	6	18	88.4
LK161-S30	16	G1/8"	6~8mm	0	30	105.2
LK161-S36	16	G1/8"	6~8mm	0	36	125

Note:10A and signal(5A) can be freely combined, please contact customer service for details.

## Rotary Union Specifications

Parameter	Value
Passage	16 in 16 out, G1/8"
Max Pressure	1MPa(high pressure can be customized), Vacuum 0.01torr
Torque	Related to the connection size, please see the product selection table

## Electrical Data

Parameter	Power	Signal
Rated Voltage	0~240VAC/VDC	0~240VAC/VDC
Insulation Resistance	≥500MΩ/500VDC	≥500MΩ/500VDC
Lead Wires	AWG17#Teflon/PVC	AWG22#Teflon/PVC
Lead Length	Standard 300mm(adjustable on request)	
Dielectric Strength	500VAC@50Hz, 60s	
Electrical Noise	<0.01Ω	

## Mechanical Data

Parameter	Value
Working life	Over 10 Million Revs
Rated Rotating Speed	500RPM
Working Temperature	-30°C~80°C
Operating Humidity	0~85% RH
Contact Material	Precious Metal
Housing Material	Aluminium Alloy
Protection Grade	IP51

# LK241 SERIES

## 24 passages Pneumatic Rotary Union--Can combine electric wires

LK241 series is 24 passages Pneumatic Rotary Union(Can combine electric wires), with connection size G1/8", compact size, light weight, low torque, Also optional for transmitting power line, signal line, industrial bus, control line, Electromagnetic valve, induction line, etc.; Standard nstallation is flange mounting. Media Types: compressed Air/Gas, vacuum, etc.

### Product images

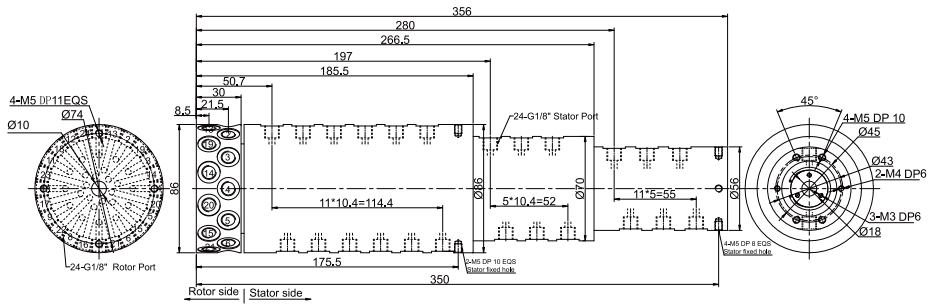


The pictures are for reference only

As the signal pathway increases or the combination of light and electricity results in changes in the appearance and size of the product, the actual product shall prevail.



## Lk241 Series Dimensions

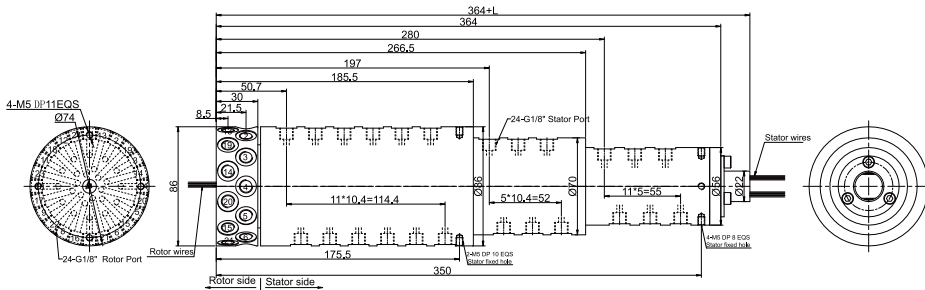


LK241 (rotary union only for pneumatic) drawing (24 in 24 out, connection size G1/8")

## Parts List

Model	Passages	Connection Size	Adaptive tube
Lk241	24	G1/8"	6~8mm

## LK241S Series Dimensions

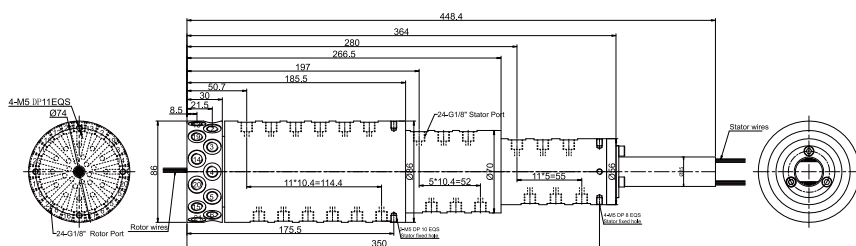


LK241S-S12 (S18, S24, S36) drawing 24 in 24 out, connection size G1/8"+12~36 wires x signal(2A)

## Parts List

Model	Passages	Connection Size	Adaptive tube	Signal(2A)	L(mm)
LK241S-S12	24	G1/8"	6~8mm	12	22.5
LK241S-S18	24	G1/8"	6~8mm	18	29.5
LK241S-S24	24	G1/8"	6~8mm	24	40.1
LK241S-S36	24	G1/8"	6~8mm	36	53.8

## LK241S-S56 Series Dimensions

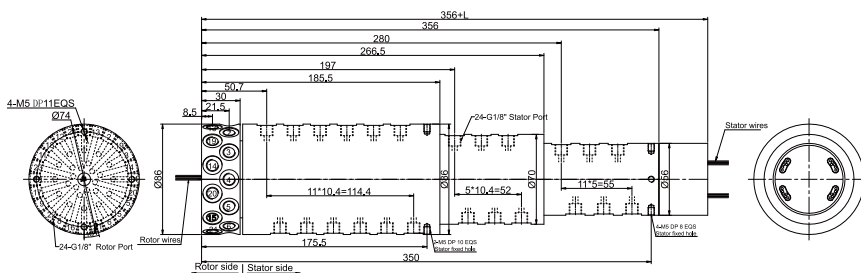


LK241S-S56 drawing 24 in 24 out, connection size G1/8"

### Parts List

Model	Passages	Connection Size	Adaptive tube	Signal(2A)
LK241S-S56	24	G1/8"	6mm	56mm

## LK241-PXX-SXX Series Dimensions



LK241-PXX-SXX drawing 24 in 24 out, connection size G1/8"+signal(5A)/10A

### Parts List

Model	Passages	Connection Size	Adaptive tube	10A	Signal(5A)	L(mm)
LK241-P0610	24	G1/8"	6~8mm	6	0	38
LK241-S06	24	G1/8"	6~8mm	0	6	38
LK241-P1210	24	G1/8"	6~8mm	12	0	54.8
LK241-P0610-S06	24	G1/8"	6~8mm	6	6	54.8
LK241-S12	24	G1/8"	6~8mm	0	12	54.8
LK241-P1810	24	G1/8"	6~8mm	18	0	71.5
LK241-P0610-S12	24	G1/8"	6~8mm	6	12	71.5
LK241-P1210-S06	24	G1/8"	6~8mm	12	6	71.5

Model	Passages	Connection Size	Adaptive tube	10A	Signal(5A)	L(mm)
LK241-S18	24	G1/8"	6~8mm	0	18	71.5
LK241-S24	24	G1/8"	6~8mm	0	24	88.4
LK241-P0610-S18	24	G1/8"	6~8mm	6	18	88.4
LK241-S30 (2A)	24	G1/8"	6~8mm	0	30	105.2
LK241-S36 (2A)	24	G1/8"	6~8mm	0	36	125

Note:10A and signal(5A) can be freely combined, please contact customer service for details.

## Rotary Union Specifications

Parameter	Value
Passage	24 in 24 out, G1/8"
Max Pressure	1MPa(high pressure can be customized), Vacuum 0.01torr
Torque	Related to the connection size, please see the product selection table

## Electrical Data

Parameter	Power	Signal
Rated Voltage	0~240VAC/VDC	0~240VAC/VDC
Insulation Resistance	≥500MΩ/500VDC	≥500MΩ/500VDC
Lead Wires	AWG17#Teflon/PVC	AWG22#Teflon/PVC
Lead Length	Standard 300mm(adjustable on request)	
Dielectric Strength	500VAC@50Hz, 60s	
Electrical Noise	<0.01Ω	

## Mechanical Data

Parameter	Value
Working life	Over 10 Million Revs
Rated Rotating Speed	300RPM
Working Temperature	-30°C~80°C
Operating Humidity	0~85% RH
Contact Material	Precious Metal
Housing Material	Aluminium Alloy
Protection Grade	IP51

## Product Quality Level Table

Products Level Code	Max Rotating Speed	Working Life	Contact Material
Common Quality Level	250RPM	20 Million Revs	Previous Metal
Industrial Quality Level	600RPM	80 Million Revs	Gold-gold
High-end Quality Level	1000RPM	150 Million Revs	Gold Alloy

## Product Quality Level Table

Rings	1	2	3	4	5	6	7	8	9	10	11	12
Color	Black	Red	Yellow	Green	Blue	White	Black	Red	Yellow	Green	Blue	White

Note: 6 wires for one group color, from 7-12, repeat the same color as 1...6, indicate with number code pipe.

## Options for Custom Slip Ring

Note: Below special demands can be customized. The delivery date will be extended about 3 to 15 days;also the cost will be increased about 5% to 50%. Most of our basic parts are standard and modular,which can save the cost and lead time.

- 1、 Inner bore size, cable exit way and cable length for both rotor and stator can be customized.
- 2、 Because of the structure limitation, length/height/OD can be customized on your request.
- 3、 Max support 200 rings of power/signal.
- 4、 Aviation plug, terminal and heat-shrink tube are optional.
- 5、 Combined slip ring for Yaskawa, Panasonic and Siemens servo control signal, power line and encoder line.
- 6、 Support mixed high speed data transmission(including Ethernet, USB, RS232, RS485, Profibus, CanBUS, CANOPEN, DeviceNET, CC-LINK, ProfiNET,EtherCAT, etc).
- 7、 Can combine temperature control signal with thermocouple signal.
- 8、 Special environment can be customized, such as quakeproof, high temperature, etc.
- 9、 Combined Pneumatic/hydraulic joint with electric slip ring.
- 10、 High temperature can up to 500 degree centigrade.
- 11、 High voltage can up to 110KV.
- 12、 Rotating speed can up to 10000RPM.
- 13、 Maximum current can up to 5000(A) amperes.
- 14、 Military Grade.
- 15、 Optional for underwater IP65, IP68.
- 16、 Optional for stainless steel housing.